

PTC124G Package Terminal Air Conditioner

PTC124G00DHXXGA
PTC124G00HRXXGA
PTC124G00HXXXGA
PTC124G15AXXXGA
PTC124G25AXXXGA
PTC124G25CXXXGA
PTC124G25QRXXGA
PTC124G25RXXXGA
PTC124G25VXXXGA
PTC124G35AXXXGA
PTC124G35CQXXGA
PTC124G35CRXXGA
PTC124G35CXXXGA
PTC124G35DXXXGA
PTC124G35QRXXGA
PTC124G35QXXXGA
PTC124G35RXXXGA
PTC124G35VXXXGA
PTC124G50AXXXGA
PTC124G50CXXXGA
PTC124G50QRXXGA
PTC124G50QXXXGA
PTC124G50RXXXGA
PTC124G50VXXXGA



Amana® is a registered trademark of Maytag Corporation or its related companies and is used under license. All rights reserved.

This manual is to be used by qualified technicians only.

Important Information

Index

Functional Parts List	3
Illustration and Parts	4 - 13

Views shown are for parts illustrations only, not servicing procedures

Text Codes:

AR - As Required

NA - Not Available

NS - Not Shown

00000000 - See Note

QTY - Quantity Example (QTY 3) (If Quantity not shown, Quantity = 1)

M - Model Example (M1) (If M Code not shown, then part is used on all Models)

Expanded Model Nomenclature:

Example M1 - Model#1 M2 - Model#2 M3 - Model#3

Goodman Company, L.P. is not responsible for personal injury or property damage resulting from improper service. Review all service information before beginning repairs.

Warranty service must be performed by an authorized technician, using authorized factory parts. If service is required after the warranty expires, Goodman Company, L.P. also recommends contacting an authorized technician and using authorized factory parts.

Goodman Company, L.P. reserves the right to discontinue, or change at any time, specifications or designs without notice or without incurring obligations.

For assistance within the U.S.A. contact:

Homeowner Support
Goodman Company, L.P.
19001 Kermier Road
Waller, Texas 77484
877-254-4729-Telephone
713-863-2382-Facsimile

For assistance outside the U.S.A. contact:

International Division
Goodman Company, L.P.
19001 Kermier Road
Waller, Texas 77484
713-861-2500-Telephone
713-863-2382-Facsimile

Functional Parts

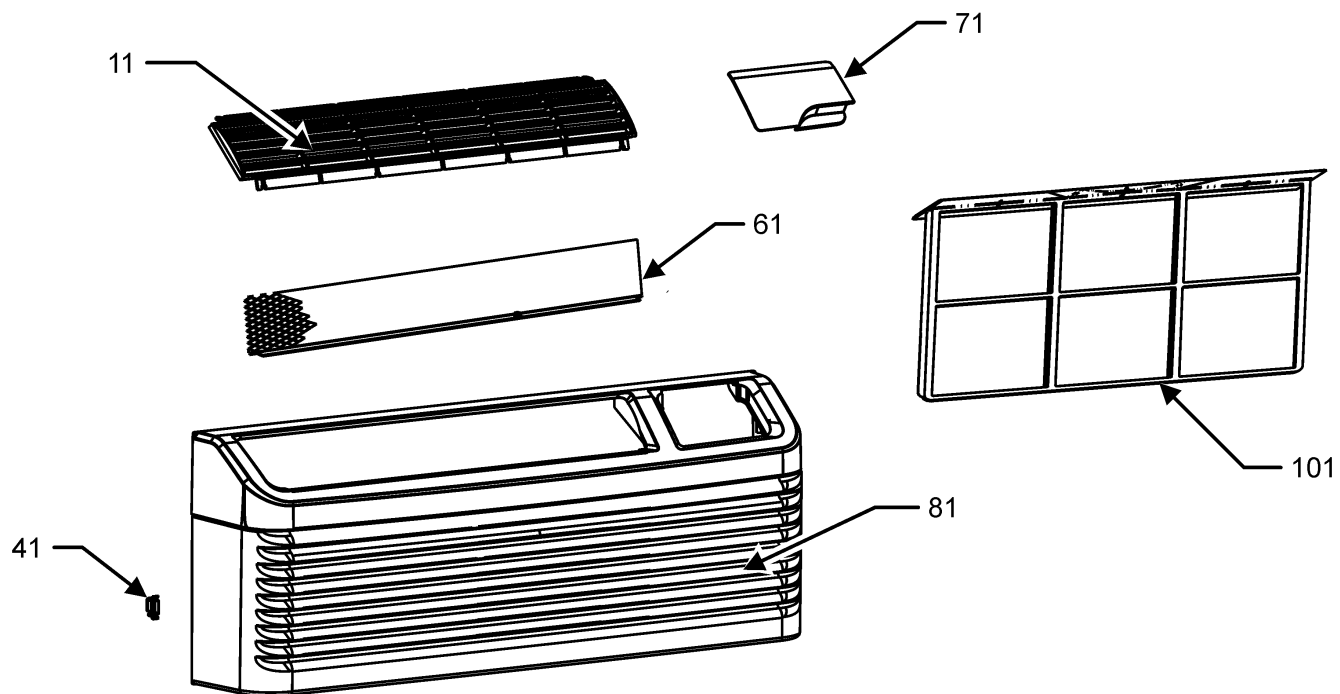
Part

No: Description:

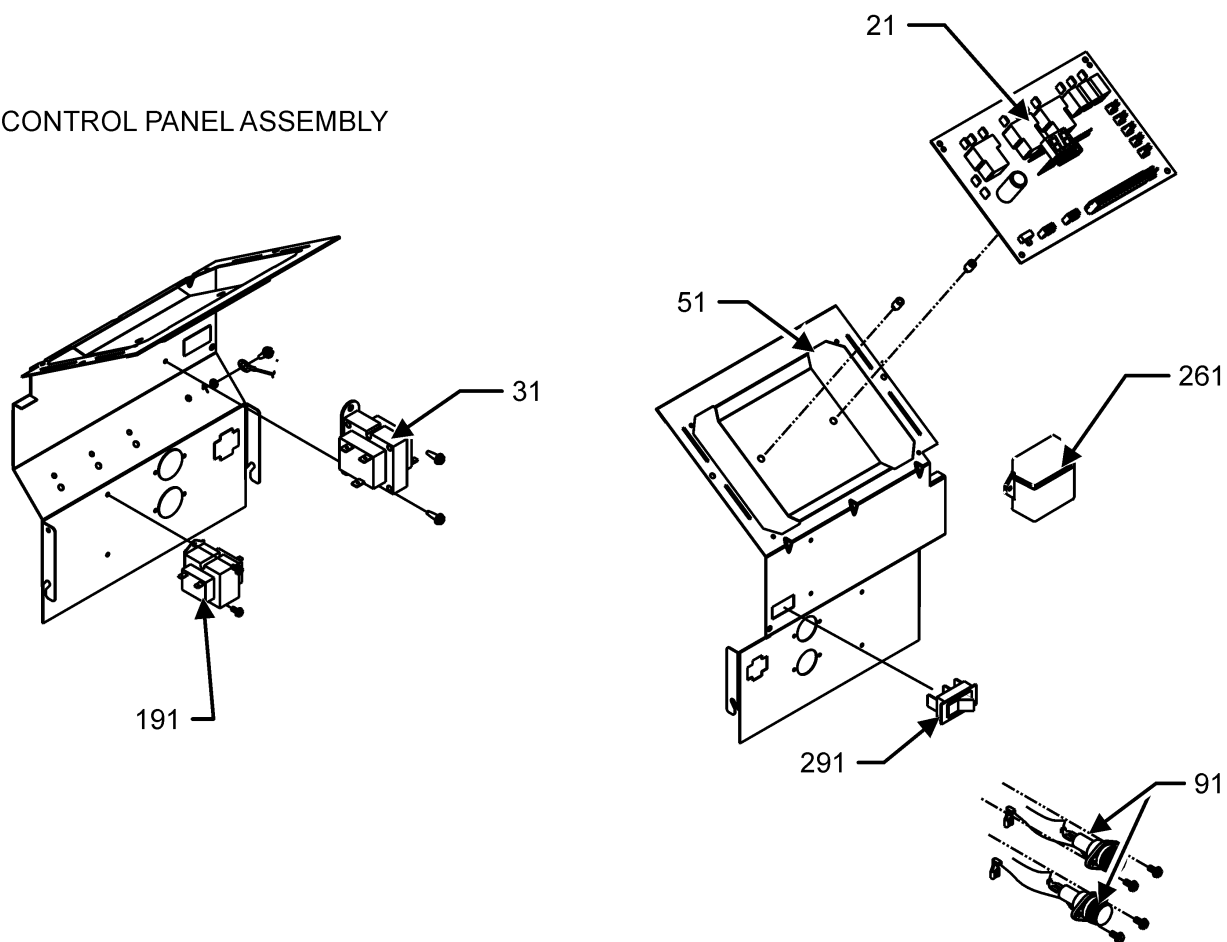
		Expanded Model Nomenclature
CAP010000500RP	CAPACITOR (M1, M2, M3, M4, M5, M6, M7, M8, M9, M10, M11, M12, M13, M14, M15, M16, M17, M18)	M1 - PTC124G00DHXXGA M2 - PTC124G00HRXXGA M3 - PTC124G00HXXXGA M4 - PTC124G15AXXXGA M5 - PTC124G25AXXXGA M6 - PTC124G25CXXXGA M7 - PTC124G25QRXXGA M8 - PTC124G25RXXXGA M9 - PTC124G25VXXXGA M10 - PTC124G35AXXXGA M11 - PTC124G35CQXXGA M12 - PTC124G35CRXXGA M13 - PTC124G35CXXXGA M14 - PTC124G35DXXXGA M15 - PTC124G35QRXXGA M16 - PTC124G35QXXXGA M17 - PTC124G35RXXXGA M18 - PTC124G35VXXXGA M19 - PTC124G50AXXXGA M20 - PTC124G50CXXXGA M21 - PTC124G50QRXXGA M22 - PTC124G50QXXXGA M23 - PTC124G50RXXXGA M24 - PTC124G50VXXXGA
CAP015000500RP	CAPACITOR (M19, M20, M21, M22, M23, M24)	
CAP030300450CS	CAPACITOR, 500V	
44A287AK&JEKD	COMPRESSOR, RECHI	
RSKP0012	CONTROL BOARD M70	
0130P00128	CORD, 277V, 20A (M1, M2, M3, M4, M5, M6, M7, M8, M9, M10, M11, M12, M13, M14, M15, M16, M17, M18)	
0130P00129	CORD, 277V, 30A (M19, M20, M21, M22, M23, M24)	
0131P00038	FAN MOTOR, INDOOR (M19, M20, M21, M22, M23, M24)	
0131P00037	FAN MOTOR, INDOOR (M1, M2, M3, M4, M5, M6, M7, M8, M9, M10, M11, M12, M13, M14, M15, M16, M17, M18)	
0131P00032	FAN MOTOR, OUTDOOR	
0161P00055	FAN, CONDENSER	
A3410402	FUSE 15A (M1, M2, M3, M4, M5, M6, M7, M8, M9)	
A3410403	FUSE 20A (M10, M11, M12, M13, M14, M15, M16, M17, M18)	
A3410404	FUSE 25A (M19, M20, M21, M22, M23, M24)	
0275P00023	HEATER ASSY (M5, M6, M7, M8, M9)	
0275P00026	HEATER ASSY (M4)	
0275P00040	HEATER ASSY (M10, M11, M12, M13, M14, M15, M16, M17, M18)	
0275P00041	HEATER ASSY (M19, M20, M21, M22, M23, M24)	
0130P00133	HUMIDITY SENSOR (M1, M9, M14, M18, M24)	
RSKP0015	MEMBRANE KIT	
0130P00137	MOTOR (M1, M9, M14, M18, M24)	
60343539	OVERLOAD PROTECTOR	
PCBCP147	PCB, CONTROL, D70 (M1, M9, M14, M18, M24)	
0130M00169	SWITCH, HIGH PRESS	
802007090	TERM BOARD	
0130P00141	THERMISTOR IAT BLACK (M6, M11, M12, M13, M20)	
0130P00164	THERMISTOR IAT BLACK (M1, M2, M3, M4, M5, M7, M8, M9, M10, M14, M15, M16, M17, M18, M19, M21, M22, M23, M24)	
0130P00165	THERMISTOR ICT RED (M1, M2, M3, M4, M5, M7, M8, M9, M10, M14, M15, M16, M17, M18, M19, M21, M22, M23, M24)	
0130P00084	THERMISTOR ICT RED (M6, M11, M12, M13, M20)	
0130P00134	THERMISTOR IDT YELLOW	
0130P00077	THERMISTOR IHD ORANGE (M2, M7, M8, M12, M15, M17, M21, M23)	
0130P00098	THERMISTOR OAT GREEN (M1, M2, M7, M8, M9, M12, M14, M15, M17, M18, M21, M23, M24)	
0130P00094	THERMISTOR OCT BLUE (M2, M7, M8, M12, M15, M17, M21, M23)	
0130M00342	TRANSFORMER 20VA 265V (M4, M5, M6, M7, M8, M9, M10, M11, M12, M13, M14, M15, M16, M17, M18, M19, M20, M21, M22, M23, M24)	
0130M00601	TRANSFORMER, 40VA, 277V TO 24V (M1, M2, M3, M9, M14, M18, M24)	

Front Panel and Control Panel Assembly

FRONT PANEL ASSEMBLY



CONTROL PANEL ASSEMBLY

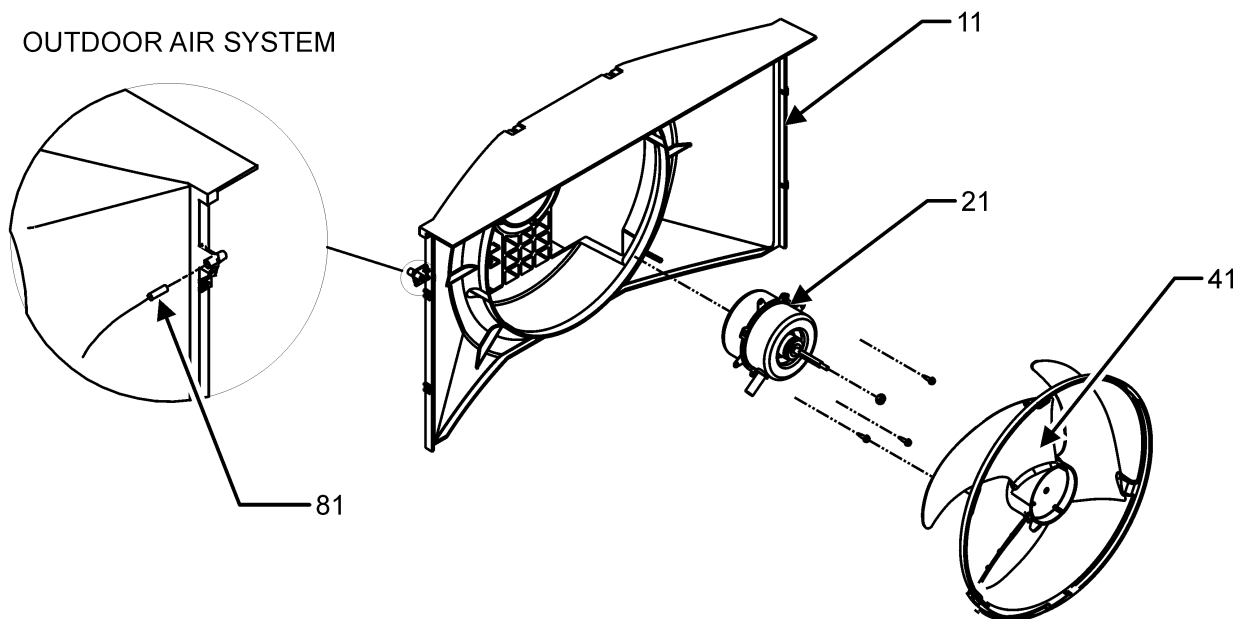


Front Panel and Control Panel Assembly

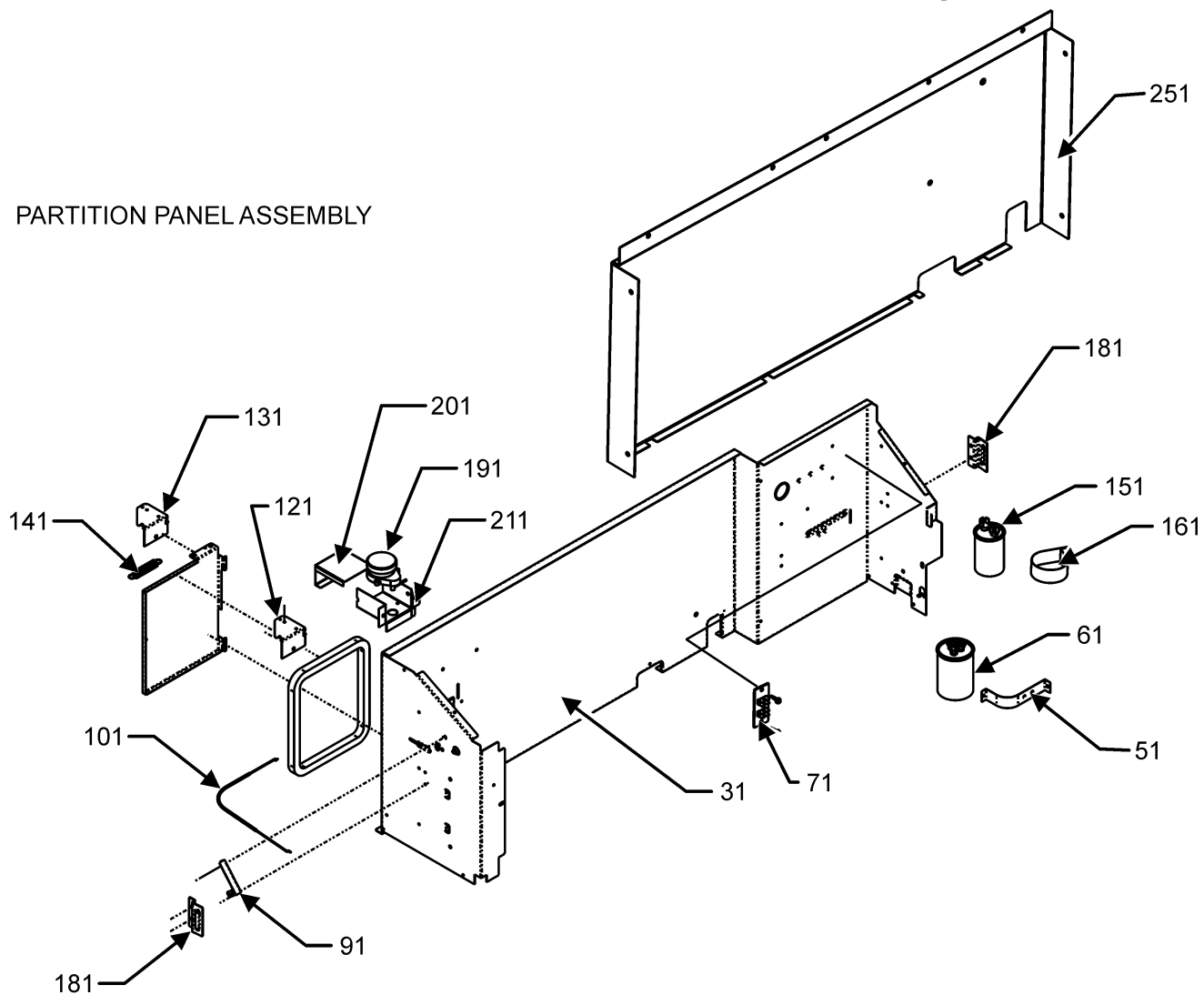
Ref. Part No: No:	Description:	Ref. Part No: No:	Description:
Image 1:		Expanded Model Nomenclature	
11	0161P00048	FRONT-DICHARGE LOUVERS (M4, M5, M6, M7, M8, M9, M10, M11, M12, M13, M14, M15, M16, M17, M18, M19, M20, M21, M22, M23, M24)	
21	RSKP0012	CONTROL BOARD M70	
31	0130M00342	TRANSFORMER 20VA 265V (M4, M5, M6, M7, M8, M9, M10, M11, M12, M13, M14, M15, M16, M17, M18, M19, M20, M21, M22, M23, M24)	
41	0163P00025	CLIP (M4, M5, M6, M7, M8, M9, M10, M11, M12, M13, M14, M15, M16, M17, M18, M19, M20, M21, M22, M23, M24)	
51	0121P00130	PANEL, CONTROL	
61	0121P00194BL	SCREEN, DISCHARGE, PAINTED (M4, M5, M6, M7, M8, M9, M10, M11, M12, M13, M14, M15, M16, M17, M18, M19, M20, M21, M22, M23, M24)	
71	0261P00003	DOOR ASSY -AMANA- (M4, M5, M6, M7, M8, M9, M10, M11, M12, M13, M14, M15, M16, M17, M18, M19, M20, M21, M22, M23, M24)	
81	0261P00011	FRONT ASSY (M4, M5, M6, M7, M8, M9, M10, M11, M12, M13, M14, M15, M16, M17, M18, M19, M20, M21, M22, M23, M24)	
91	C6476001	BAYONET FUSE HOLDER (M1, M2, M3, M4, M5, M6, M7, M8, M9)	
91	C6476002	BAYONET FUSE HOLDER (M10, M11, M12, M13, M14, M15, M16, M17, M18)	
91	C6476003	BAYONET FUSE HOLDER (M19, M20, M21, M22, M23, M24)	
101	0161P00035	FILTER, RACK (M4, M5, M6, M7, M8, M9, M10, M11, M12, M13, M14, M15, M16, M17, M18, M19, M20, M21, M22, M23, M24)	
191	0130M00601	TRANSFORMER, 40VA, 277V TO 24V (M1, M2, M3, M9, M14, M18, M24)	
261	0130P00104	ANTENNA (M2, M7, M8, M12, M15, M17, M21, M23)	
291	B1337701	PADDLE SWITCH (M1, M9, M14, M18, M24)	
NS	A3410402	FUSE 15A (M1, M2, M3, M4, M5, M6, M7, M8, M9)	
NS	A3410403	FUSE 20A (M10, M11, M12, M13, M14, M15, M16, M17, M18)	
NS	A3410404	FUSE 25A (M19, M20, M21, M22, M23, M24)	
NS	PCBCP147	PCB, CONTROL, D70 (M1, M9, M14, M18, M24)	
		M1 - PTC124G00DHXXGA M2 - PTC124G00HRXXGA M3 - PTC124G00HXXGA M4 - PTC124G15AXXXGA M5 - PTC124G25AXXXGA M6 - PTC124G25CXXXGA M7 - PTC124G25QRXXGA M8 - PTC124G25RXXXGA M9 - PTC124G25VXXXGA M10 - PTC124G35AXXXGA M11 - PTC124G35CQXXGA M12 - PTC124G35CRXXGA M13 - PTC124G35CXXXGA M14 - PTC124G35DXXXGA M15 - PTC124G35QRXXGA M16 - PTC124G35QXXXGA M17 - PTC124G35RXXXGA M18 - PTC124G35VXXXGA M19 - PTC124G50AXXXGA M20 - PTC124G50CXXXGA M21 - PTC124G50QRXXGA M22 - PTC124G50QXXXGA M23 - PTC124G50RXXXGA M24 - PTC124G50VXXXGA	

Outdoor Air System and Partition Panel

OUTDOOR AIR SYSTEM



PARTITION PANEL ASSEMBLY

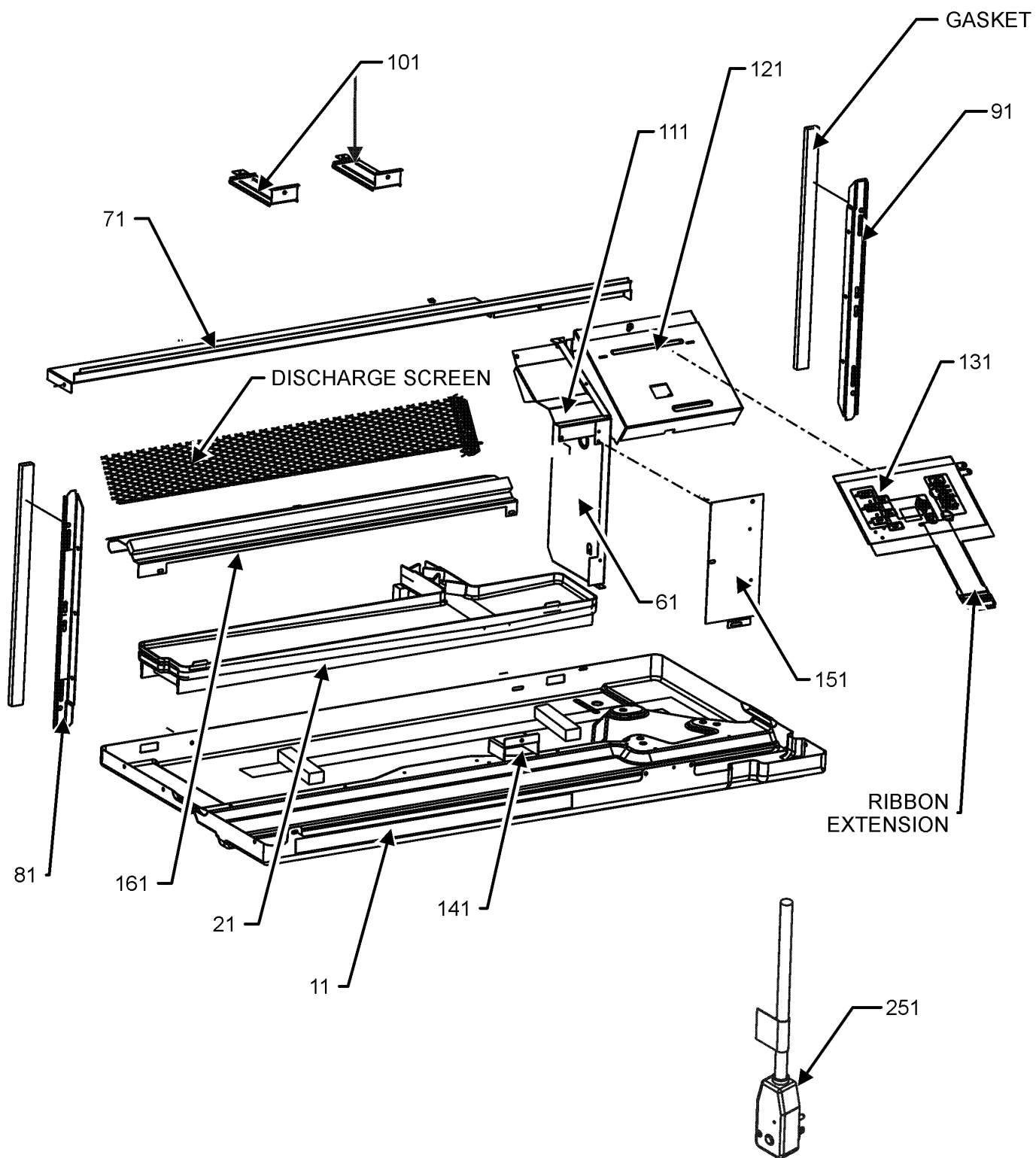


Outdoor Air System and Partition Panel

Ref. Part No: No:	Description:	Ref. Part No: No:	Description:
Image 1:		Expanded Model Nomenclature	
11	0161P00110	CONDENSER SHROUD	M1 - PTC124G00DHXXGA
21	0131P00032	FAN MOTOR, OUTDOOR	M2 - PTC124G00HRXXGA
31	0121P00108NG	PANEL-PARTITION (M1, M2, M3, M4, M5, M6, M8, M9, M10, M12, M13, M14, M17, M18, M19, M20, M23, M24)	M3 - PTC124G00HXXXGA
31	0121P00093NG	PANEL-PARTITION PNT (M7, M11, M15, M16, M21, M22)	M4 - PTC124G15AXXXGA
41	0161P00055	FAN, CONDENSER	M5 - PTC124G25AXXXGA
51	C6300502	CAPACITOR STRAP	M6 - PTC124G25CXXXGA
61	CAP030300450C S	CAPACITOR, 500V	M7 - PTC124G25QRXXGA
71	802007090	TERM BOARD	M8 - PTC124G25RXXXGA
81	0130P00098	THERMISTOR OAT GREEN (M1, M2, M7, M8, M9, M12, M14, M15, M17, M18, M21, M23, M24)	M9 - PTC124G25VXXXGA
91	11046302	LEVER ARM (M2, M3, M4, M5, M6, M8, M10, M12, M13, M17, M19, M20, M23)	M10 - PTC124G35AXXXGA
101	0163P00019	CABLE (M2, M3, M4, M5, M6, M8, M10, M12, M13, M17, M19, M20, M23)	M11 - PTC124G35CQXXGA
111	0121P00177	DOOR-VENT PTC (M6, M12, M13, M20)	M12 - PTC124G35CRXXGA
121	0121P00079	BRACKET, VENT DOOR (M1, M9, M14, M18, M24)	M13 - PTC124G35CXXXGA
131	0121P00180	BRACKET, POWER VENT (M1, M9, M14, M18, M24)	M14 - PTC124G35DXXXGA
131	0121P00072NG	BRACKET, VENT DOOR (M2, M3, M4, M5, M6, M8, M10, M12, M13, M17, M19, M20, M23)	M15 - PTC124G35QRXXGA
141	11166401	EXTENSION SPRING (M1, M9, M14, M18, M24)	M16 - PTC124G35QXXXGA
151	CAP010000500R P	CAPACITOR (M1, M2, M3, M4, M5, M6, M7, M8, M9, M10, M11, M12, M13, M14, M15, M16, M17, M19, M20, M21, M22, M23, M24)	M17 - PTC124G35RXXXGA
151	CAP015000500R P	CAPACITOR (M19, M20, M21, M22, M23, M24)	M18 - PTC124G35VXXXGA
161	0163P00029	CAPACITOR CLAMP	M19 - PTC124G50AXXXGA
181	11191703	PARTITION PANEL BRACKET (M4, M5, M6, M7, M8, M9, M10, M11, M12, M13, M14, M15, M16, M17, M18, M19, M20, M21, M22, M23, M24)	M20 - PTC124G50CXXXGA
191	0130P00137	MOTOR (M1, M9, M14, M18, M24)	M21 - PTC124G50QRXXGA
201	11166201	POWER VENT COVER BRACKET (M1, M9, M14, M18, M24)	M22 - PTC124G50QXXXGA
211	11166101	POWER VENT MOTOR BRACKET (M1, M9, M14, M18, M24)	M23 - PTC124G50RXXXGA
251	0121P00091NG	PANEL-AUXILLIARY (M7, M11, M15, M16, M21, M22)	M24 - PTC124G50VXXXGA
NS	0130P00133	HUMIDITY SENSOR (M1, M9, M14, M18, M24)	

Base Pan Assembly

BASE PAN ASSEMBLY



Base Pan Assembly

Ref. Part No: No:	Description:	Ref. Part No: No:	Description:
----------------------	--------------	----------------------	--------------

Image 1:

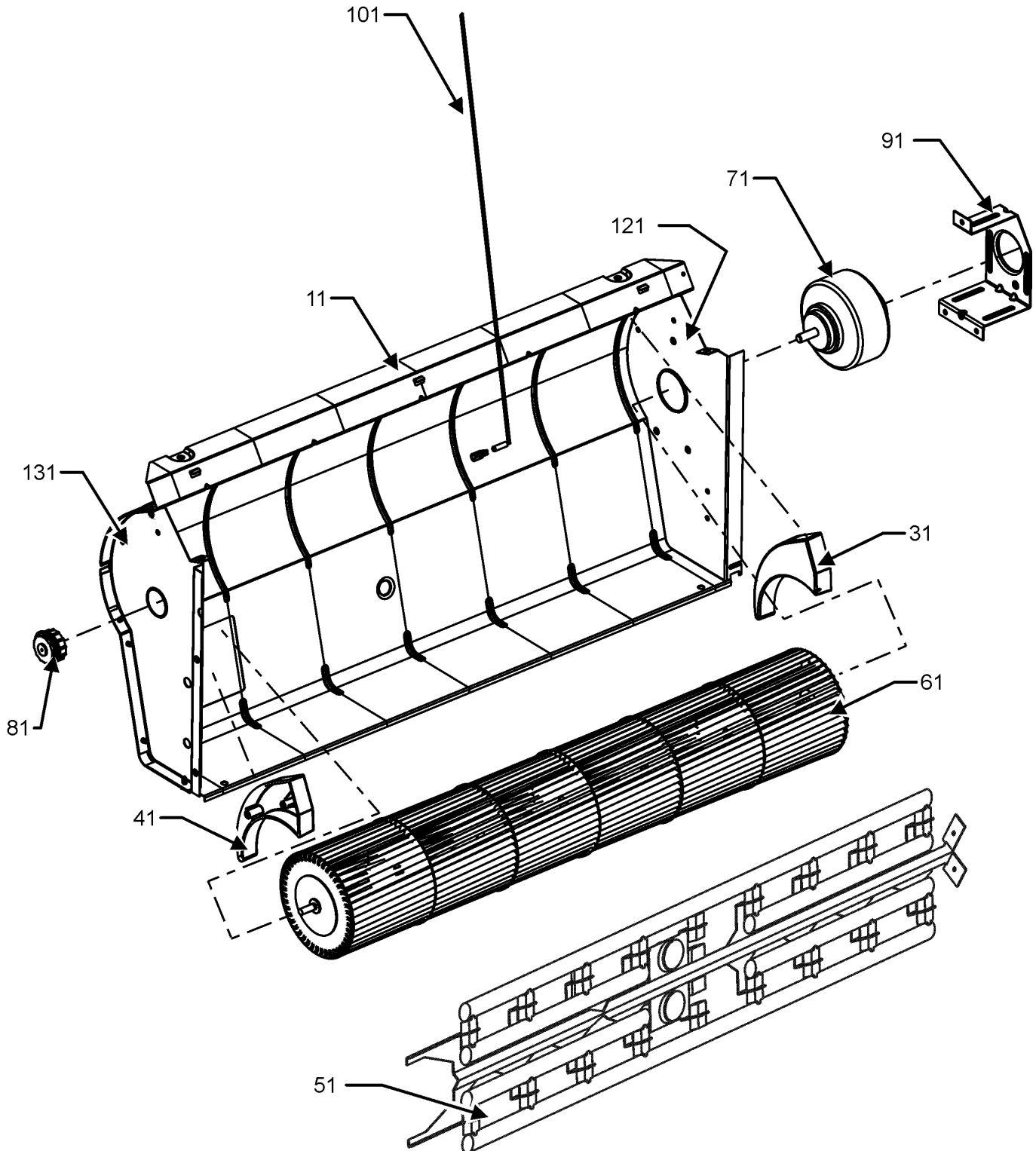
11	0121P00175DG	BASE PAN (M1, M2, M3, M4, M5, M7, M8, M9, M10, M14, M15, M16, M17, M18, M19, M21, M22, M23, M24)
11	0121P00175NG	BASE PAN (M6, M11, M12, M13, M20)
21	0161P00044	PLASTIC-DRAIN PAN
61	0121P00278	PANEL-MID PTN PTC
71	0121P00063NG	TOP, PARTITION PANEL
81	0121P00197	SEAL-L SIDE PTC
91	0121P00198	SEAL-R SIDE PTC
101	0121P00071NG	BRACE, TIE (QTY 2)
111	0121P00070DG	COVER, MOTOR
121	0121P00280	COVER-CONTROL PANEL
131	RSKP0015	MEMBRANE KIT
141	0161P00016	PLASTIC-HOOD (M1, M2, M3, M4, M5, M6, M8, M9, M10, M12, M13, M14, M17, M18, M19, M20, M23, M24)
151	20410801	ACCESS COVER
161	0121P00061DG	CUTOFF-SCROLL DG
251	0130P00128	CORD, 277V, 20A (M1, M2, M3, M4, M5, M6, M7, M8, M9, M10, M11, M12, M13, M14, M15, M16, M17, M18)
251	0130P00129	CORD, 277V, 30A (M19, M20, M21, M22, M23, M24)
NS	0121P00233	LEFT SIDE SCROLL BLOCKOFF
NS	0130P00109	MEMBRANE (CONTROL)

Expanded Model Nomenclature

M1 - PTC124G00DHXXGA
 M2 - PTC124G00HRXXGA
 M3 - PTC124G00HXXXGA
 M4 - PTC124G15AXXXGA
 M5 - PTC124G25AXXXGA
 M6 - PTC124G25CXXXGA
 M7 - PTC124G25QRXXGA
 M8 - PTC124G25RXXXGA
 M9 - PTC124G25VXXXGA
 M10 - PTC124G35AXXXGA
 M11 - PTC124G35CQXXGA
 M12 - PTC124G35CRXXGA
 M13 - PTC124G35CXXXGA
 M14 - PTC124G35DXXXGA
 M15 - PTC124G35QRXXGA
 M16 - PTC124G35QXXXGA
 M17 - PTC124G35RXXXGA
 M18 - PTC124G35VXXXGA
 M19 - PTC124G50AXXXGA
 M20 - PTC124G50CXXXGA
 M21 - PTC124G50QRXXGA
 M22 - PTC124G50QXXXGA
 M23 - PTC124G50RXXXGA
 M24 - PTC124G50VXXXGA

Indoor Blower Assembly

INDOOR BLOWER ASSEMBLY



Indoor Blower Assembly

Ref. Part No: No:	Description:	Ref. Part No: No:	Description:
----------------------	--------------	----------------------	--------------

Image 1:

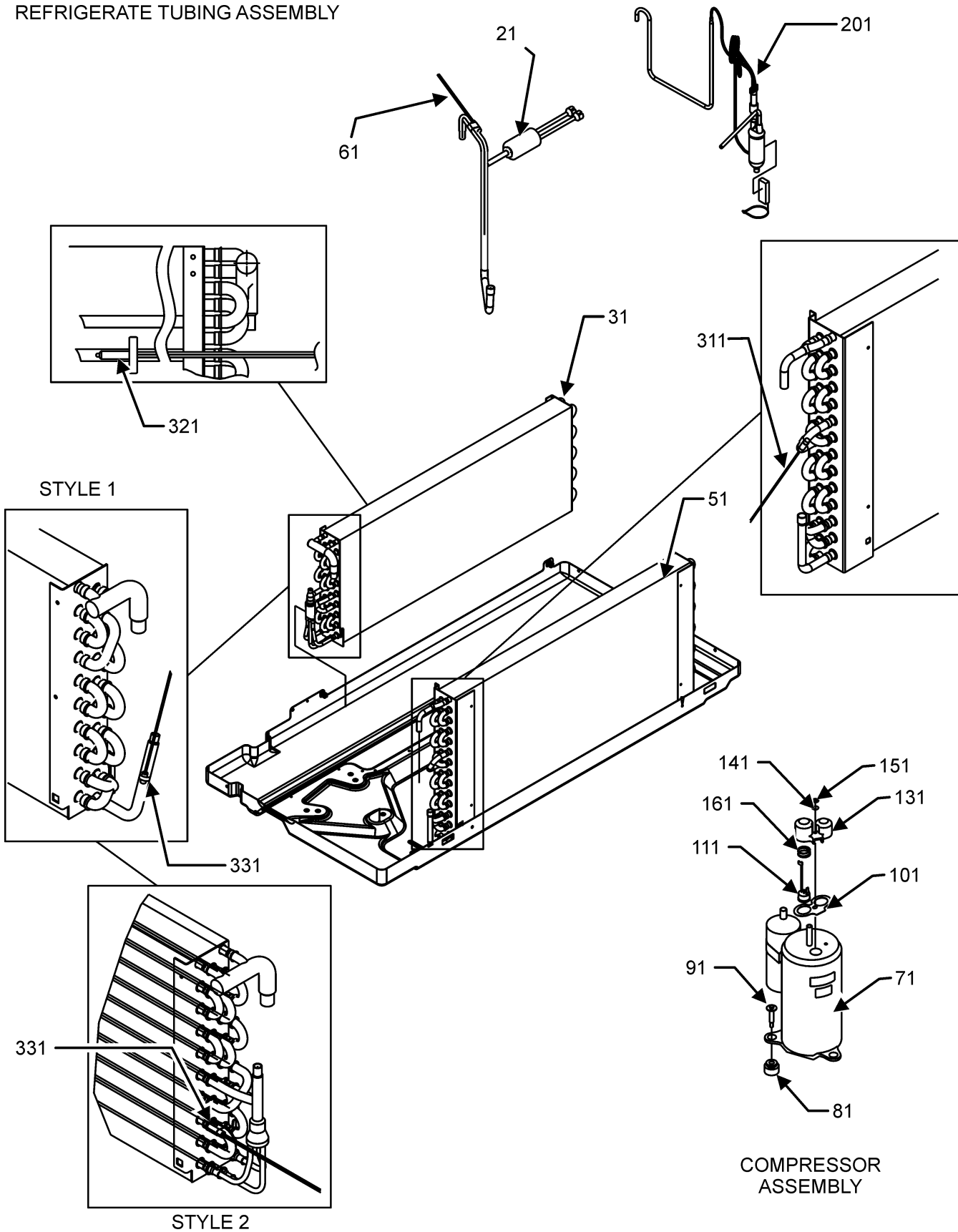
11	0121P00173DG	SCROLL
31	0161P00021	END CAP, RIGHT
41	0161P00022	END CAP, LEFT
51	0275P00023	HEATER ASSY (M5, M6, M7, M8, M9)
51	0275P00026	HEATER ASSY (M4)
51	0275P00040	HEATER ASSY (M10, M11, M12, M13, M14, M15, M16, M17, M18)
51	0275P00041	HEATER ASSY (M19, M20, M21, M22, M23, M24)
61	0150P00005	WHEEL, BLOWER
71	0131P00037	FAN MOTOR, IN DOOR (M1, M2, M3, M4, M5, M6, M7, M8, M9, M10, M11, M12, M13, M14, M15, M16, M17, M18)
71	0131P00038	FAN MOTOR, IN DOOR (M19, M20, M21, M22, M23, M24)
81	0163P00027	BEARING
91	0121P00048	BRACKET-MOTOR MOUNT
101	0130P00134	THERMISTOR IDT YELLOW
121	0121P00059DG	ENDPLATE-RH SCROLL
131	0121P00215DG	ENDPLATE- LH SCROLL

Expanded Model Nomenclature

M1 - PTC124G00DHXXGA
 M2 - PTC124G00HRXXGA
 M3 - PTC124G00HXXGGA
 M4 - PTC124G15AXXXGA
 M5 - PTC124G25AXXXGA
 M6 - PTC124G25CXXGGA
 M7 - PTC124G25QRXXGA
 M8 - PTC124G25RXXGGA
 M9 - PTC124G25VXXGGA
 M10 - PTC124G35AXXXGA
 M11 - PTC124G35CQXXGA
 M12 - PTC124G35CRXXGA
 M13 - PTC124G35CXXGGA
 M14 - PTC124G35DXXGGA
 M15 - PTC124G35QRXXGA
 M16 - PTC124G35QXXGGA
 M17 - PTC124G35RXXGGA
 M18 - PTC124G35VXXGGA
 M19 - PTC124G50AXXXGA
 M20 - PTC124G50CXXGGA
 M21 - PTC124G50QRXXGA
 M22 - PTC124G50QXXGGA
 M23 - PTC124G50RXXGGA
 M24 - PTC124G50VXXGGA

Refrigerate Tube Assembly

REFRIGERATE TUBING ASSEMBLY



Refrigerate Tube Assembly

Ref. Part

No: No:

Description:

Ref. Part

No: No:

Description:

Image 1:

21	0130M00169	SWITCH, HIGH PRESS
31	0202P00095	7MM EVAP ASSY 2ROW
51	0201P00130	5MM CONDENSER COIL ASSY (M1, M2, M3, M4, M5, M7, M8, M9, M10, M14, M15, M16, M17, M18, M19, M21, M22, M23, M24)
51	0202P00096NG	CONDENSER ASSY PAINTED (M6, M11, M12, M13, M20)
61	0130P00077	THERMISTOR IHD ORANGE (M2, M7, M8, M12, M15, M17, M21, M23)
71	44A287AK&JEKD	COMPRESSOR, RECHI
81	60130203	GROMMET - RECHI COMPRESSOR (QTY 3)
91	0163M00079	SHOULDER SCREW (QTY 3)
101	60100103	TERMINAL GASKET
111	60343539	OVERLOAD PROTECTOR
131	60100314	TERMINAL COVER - RECHI COMP
141	60100201	WASHER - RECHI COMPRESSOR
151	60100401	TERMINAL NUT - RECHI COMP
161	60500101	OLP SPRING - RECHI COMPRESSOR
201	0210P00430	CAPILLARY WELDMENT
311	0130P00094	THERMISTOR OCT BLUE (M2, M7, M8, M12, M15, M17, M21, M23)
321	0130P00141	THERMISTOR IAT BLACK (M6, M11, M12, M13, M20)
321	0130P00164	THERMISTOR IAT BLACK (M1, M2, M3, M4, M5, M7, M8, M9, M10, M14, M15, M16, M17, M18, M19, M21, M22, M23, M24)
331	0130P00084	THERMISTOR ICT RED (M6, M11, M12, M13, M20)
331	0130P00165	THERMISTOR ICT RED (M1, M2, M3, M4, M5, M7, M8, M9, M10, M14, M15, M16, M17, M18, M19, M21, M22, M23, M24)

Expanded Model Nomenclature

M1 - PTC124G00DHXXGA
M2 - PTC124G00HRXXGA
M3 - PTC124G00HXXGA
M4 - PTC124G15AXXXGA
M5 - PTC124G25AXXXGA
M6 - PTC124G25CXXGA
M7 - PTC124G25QRXXGA
M8 - PTC124G25RXXGA
M9 - PTC124G25VXXGA
M10 - PTC124G35AXXXGA
M11 - PTC124G35CQXXGA
M12 - PTC124G35CRXXGA
M13 - PTC124G35CXXGA
M14 - PTC124G35DXXGA
M15 - PTC124G35QRXXGA
M16 - PTC124G35QXXGA
M17 - PTC124G35RXXGA
M18 - PTC124G35VXXGA
M19 - PTC124G50AXXXGA
M20 - PTC124G50CXXGA
M21 - PTC124G50QRXXGA
M22 - PTC124G50QXXGA
M23 - PTC124G50RXXGA
M24 - PTC124G50VXXGA