
PTC173G Package Terminal Air Conditioner

PTC173G00AXXXBA
PTC173G00AXXXBB
PTC173G00DHXXBB
PTC173G00HQXXBA
PTC173G00HQXXBB
PTC173G00HXXBA
PTC173G00HXXBB
PTC173G25AXXXBB
PTC173G35AXXXBA
PTC173G35AXXXBB
PTC173G35CXXBA
PTC173G35CXXBB
PTC173G35VXXBB
PTC173G50AXXXBA
PTC173G50AXXXBB
PTC173G50QXXBA
PTC173G50QXXBB
PTC173G50RXXBB



Amana® is a registered trademark of Maytag Corporation or its related companies and is used under license. All rights reserved.

This manual is to be used by qualified technicians only.

This manual replaces RP-A5016K.

Important Information

Index

Functional Parts List	3
Illustration and Parts	4 - 13

Views shown are for parts illustrations only, not servicing procedures

Text Codes:

AR - As Required

NA - Not Available

NS - Not Shown

00000000 - See Note

QTY - Quantity Example (QTY 3) (If Quantity not shown, Quantity = 1)

M - Model Example (M1) (If M Code not shown, then part is used on all Models)

Expanded Model Nomenclature:

Example M1 - Model#1 M2 - Model#2 M3 - Model#3

Goodman Company, L.P. is not responsible for personal injury or property damage resulting from improper service. Review all service information before beginning repairs.

Warranty service must be performed by an authorized technician, using authorized factory parts. If service is required after the warranty expires, Goodman Company, L.P. also recommends contacting an authorized technician and using authorized factory parts.

Goodman Company, L.P. reserves the right to discontinue, or change at any time, specifications or designs without notice or without incurring obligations.

For assistance within the U.S.A. contact:

Homeowner Support
Goodman Company, L.P.
19001 Kermier Road
Waller, Texas 77484
877-254-4729-Telephone
713-863-2382-Facsimile

For assistance outside the U.S.A. contact:

International Division
Goodman Company, L.P.
19001 Kermier Road
Waller, Texas 77484
713-861-2500-Telephone
713-863-2382-Facsimile

Functional Parts

Part

No: **Description:**

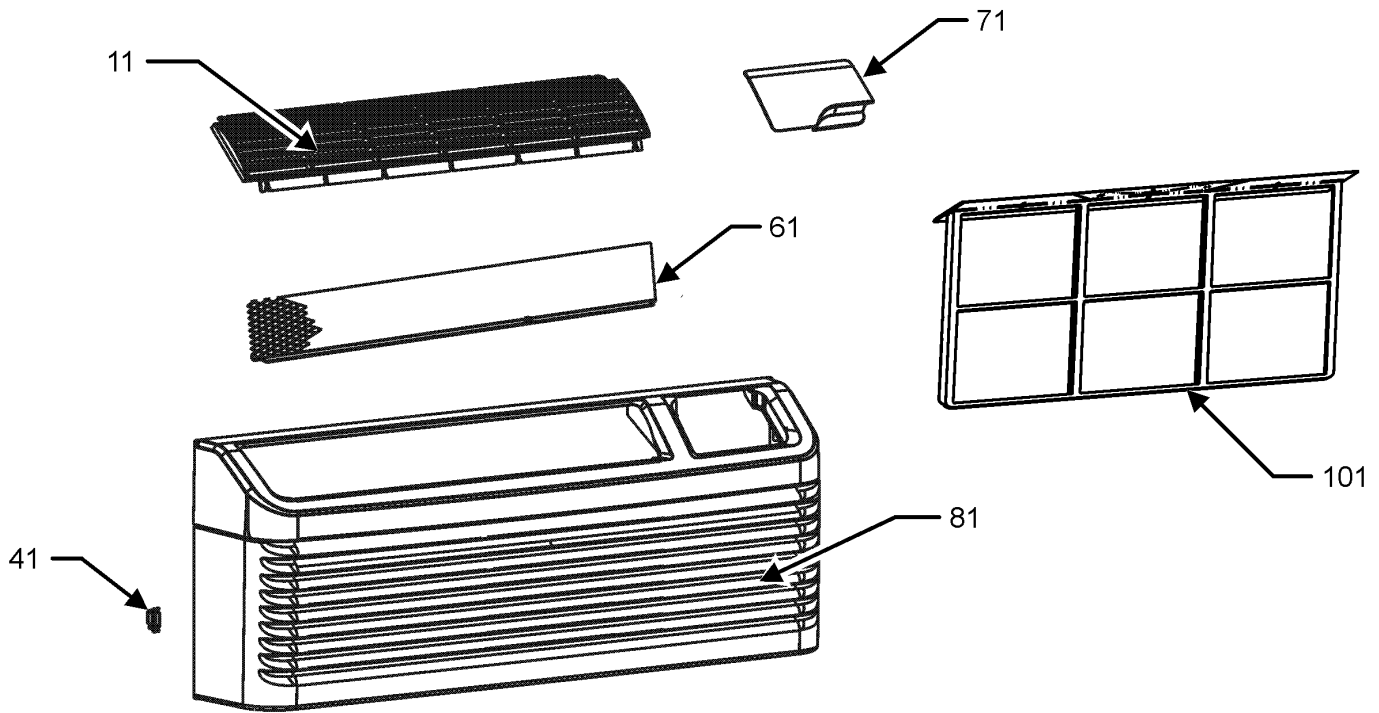
CAP400000440CS	CAP, 40 MFD/440V/SINGLE RD
CAP020000440RP	CAPACITOR
50A422Q	COMPRESSOR, RECHI
RSKP0012	CONTROL BOARD M70
RSKP0015	CONTROL PANEL COVER AND MEMBRANE
0130P00112	CORD,250VAC,15A (LCD) (M1, M2, M3, M4, M5, M6, M7, M8)
0130P00115	CORD,250VAC,20A (LCD) (M9, M10, M11, M12, M13)
0130P00118	CORD,250VAC,30A (LCD) (M14, M15, M16, M17, M18)
0131P00036	FAN MOTOR, INDOOR
0131P00030	FAN MOTOR, OUTDOOR DC
0161P00055	FAN, CONDENSER
0130P00133	HUMIDITY SENSOR (M3, M13)
0130P00137	MOTOR (M3, M13)
60343611	OVERLOAD PROTECTOR-RECHI
PCBCP147	PCB, CONTROL, D70 (M3, M13)
0130M00181	SPDT RELAY (M3, M4, M5, M6, M7)
0130M00239	SWITCH, HIGH PRESS
802007090	TERM BOARD
0130P00077	THERMISTOR (M18)
0130P00144	THERMISTOR
0130P00142	THERMISTOR
0130P00094	THERMISTOR (M18)
0130P00134	THERMISTOR - DISCHARGE
0130P00098	THERMISTOR - OUTDOOR AMBIENT (M18)
0130M00341	TRANSFORMER 20VA 230V (M1, M2, M8, M9, M10, M11, M12, M13, M14, M15, M16, M17, M18)
0130M00149	TRANSFORMER 240V/208V TO 24V, 40VA (M3, M4, M5, M6, M7, M13)
0130M00149	TRANSFORMER 240V/208V TO 24V, 40VA (M3, M4, M5, M6, M7, M13)
PCBEP101	VARIABLE SPEED TERMINAL BOARD
0150P00004	WHEEL, BLOWER

Expanded Model Nomenclature

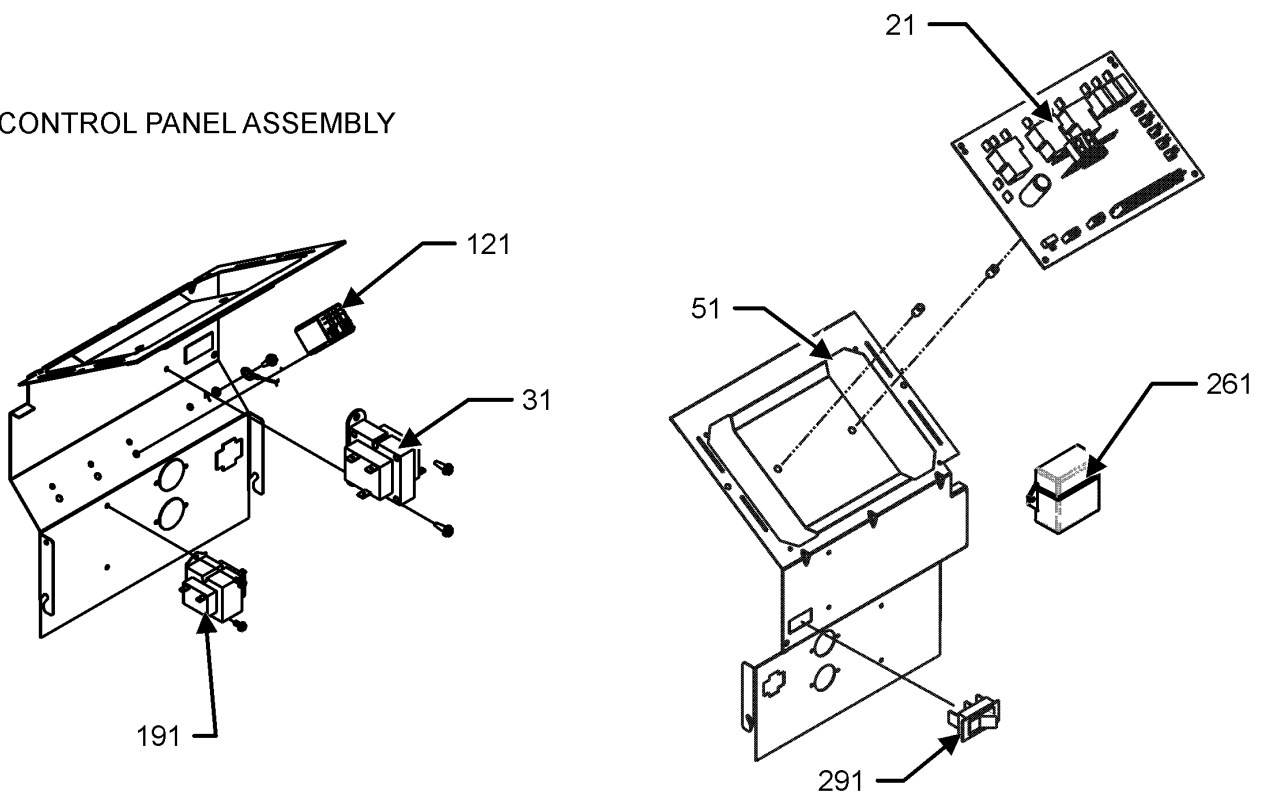
M1 - PTC173G00AXXXBA
M2 - PTC173G00AXXXBB
M3 - PTC173G00DHXXBB
M4 - PTC173G00HQXXBA
M5 - PTC173G00HQXXBB
M6 - PTC173G00HXXBA
M7 - PTC173G00HXXBB
M8 - PTC173G25AXXXBB
M9 - PTC173G35AXXXBA
M10 - PTC173G35AXXXBB
M11 - PTC173G35CXXBA
M12 - PTC173G35CXXBB
M13 - PTC173G35VXXBB
M14 - PTC173G50AXXXBA
M15 - PTC173G50AXXXBB
M16 - PTC173G50QXXBA
M17 - PTC173G50QXXBB
M18 - PTC173G50RXXBB

Front Panel and Control Panel Assembly

FRONT PANEL ASSEMBLY



CONTROL PANEL ASSEMBLY



Front Panel and Control Panel Assembly

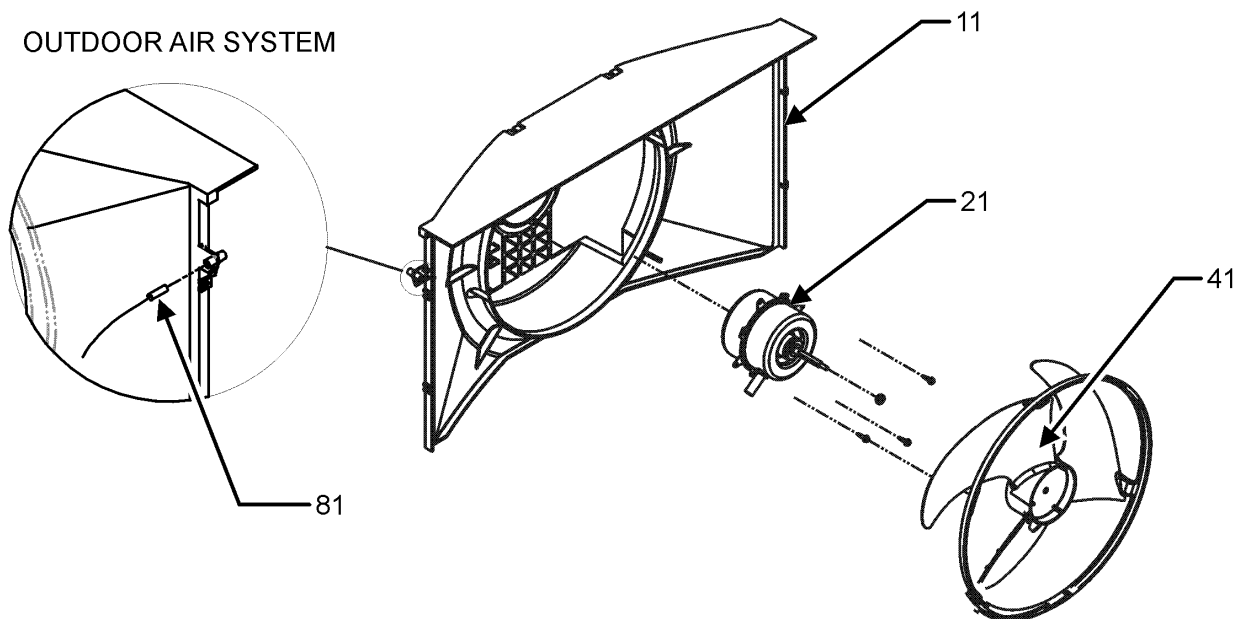
Ref. Part No: No:	Description:	Ref. Part No: No:	Description:
Image 1:			
11	0161P00048		FRONT-DICHARGE LOUVERS (M1, M2, M8, M9, M10, M11, M12, M13, M14, M15, M16, M17, M18)
21	RSKP0012		CONTROL BOARD M70
31	0130M00341		TRANSFORMER 20VA 230V (M1, M2, M8, M9, M10, M11, M12, M13, M14, M15, M16, M17, M18)
31	0130M00149		TRANSFORMER 240V/208V TO 24V, 40VA (M3, M4, M5, M6, M7, M13)
41	0163P00025		CLIP (M1, M2, M8, M9, M10, M11, M12, M13, M14, M15, M16, M17, M18)
51	0121P00130		PANEL, CONTROL
61	0121P00194BL		SCREEN, DISCHARGE, PAINTED (M1, M2, M8, M9, M10, M11, M12, M13, M14, M15, M16, M17, M18)
71	0261P00003		DOOR ASSY -AMANA- (M1, M2, M8, M9, M10, M11, M12, M13, M14, M15, M16, M17, M18)
81	0261P00011		FRONT ASSY (M1, M2, M8, M9, M10, M11, M12, M13, M14, M15, M16, M17, M18)
101	0161P00035		FILTER, RACK (M1, M2, M8, M9, M10, M11, M12, M13, M14, M15, M16, M17, M18)
121	0130M00181		SPDT RELAY (M3, M4, M5, M6, M7)
191	0130M00149		TRANSFORMER 240V/208V TO 24V, 40VA (M3, M4, M5, M6, M7, M13)
261	0130P00104		ANTENNA (M18)
291	B1337701		PADDLE SWITCH (M3, M13)
NS	PCBCP147		PCB, CONTROL, D70 (M3, M13)

Expanded Model Nomenclature

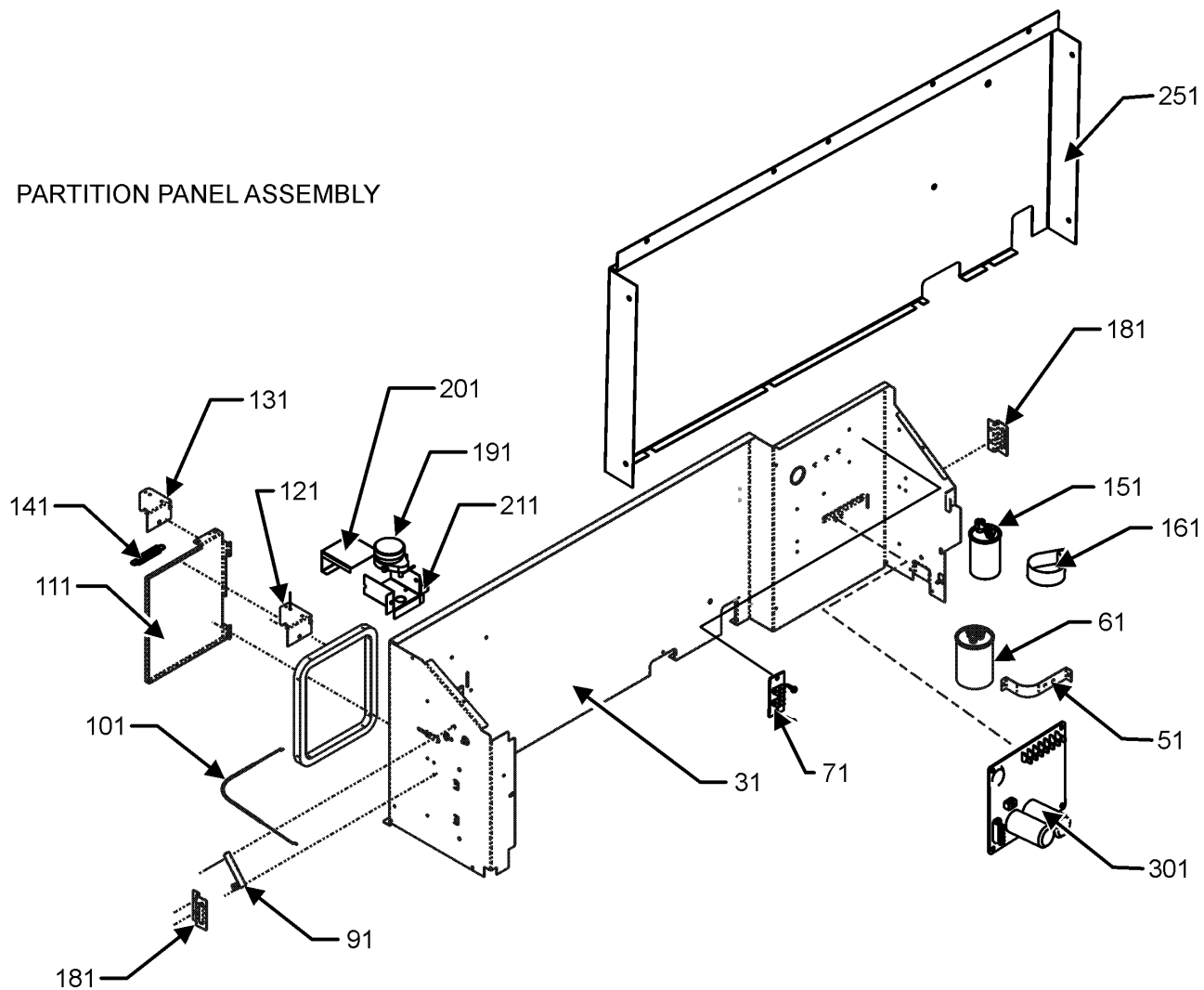
M1 - PTC173G00AXXXBA
 M2 - PTC173G00AXXXBB
 M3 - PTC173G00DHXXBB
 M4 - PTC173G00HQXXBA
 M5 - PTC173G00HQXXBB
 M6 - PTC173G00HXXXBA
 M7 - PTC173G00HXXXBB
 M8 - PTC173G25AXXXBB
 M9 - PTC173G35AXXXBA
 M10 - PTC173G35AXXXBB
 M11 - PTC173G35CXXXBA
 M12 - PTC173G35CXXXBB
 M13 - PTC173G35VXXXBB
 M14 - PTC173G50AXXXBA
 M15 - PTC173G50AXXXBB
 M16 - PTC173G50QXXXBA
 M17 - PTC173G50QXXXBB
 M18 - PTC173G50RXXXBB

Outdoor Air and Partition Panel Assembly

OUTDOOR AIR SYSTEM



PARTITION PANEL ASSEMBLY



Outdoor Air and Partition Panel Assembly

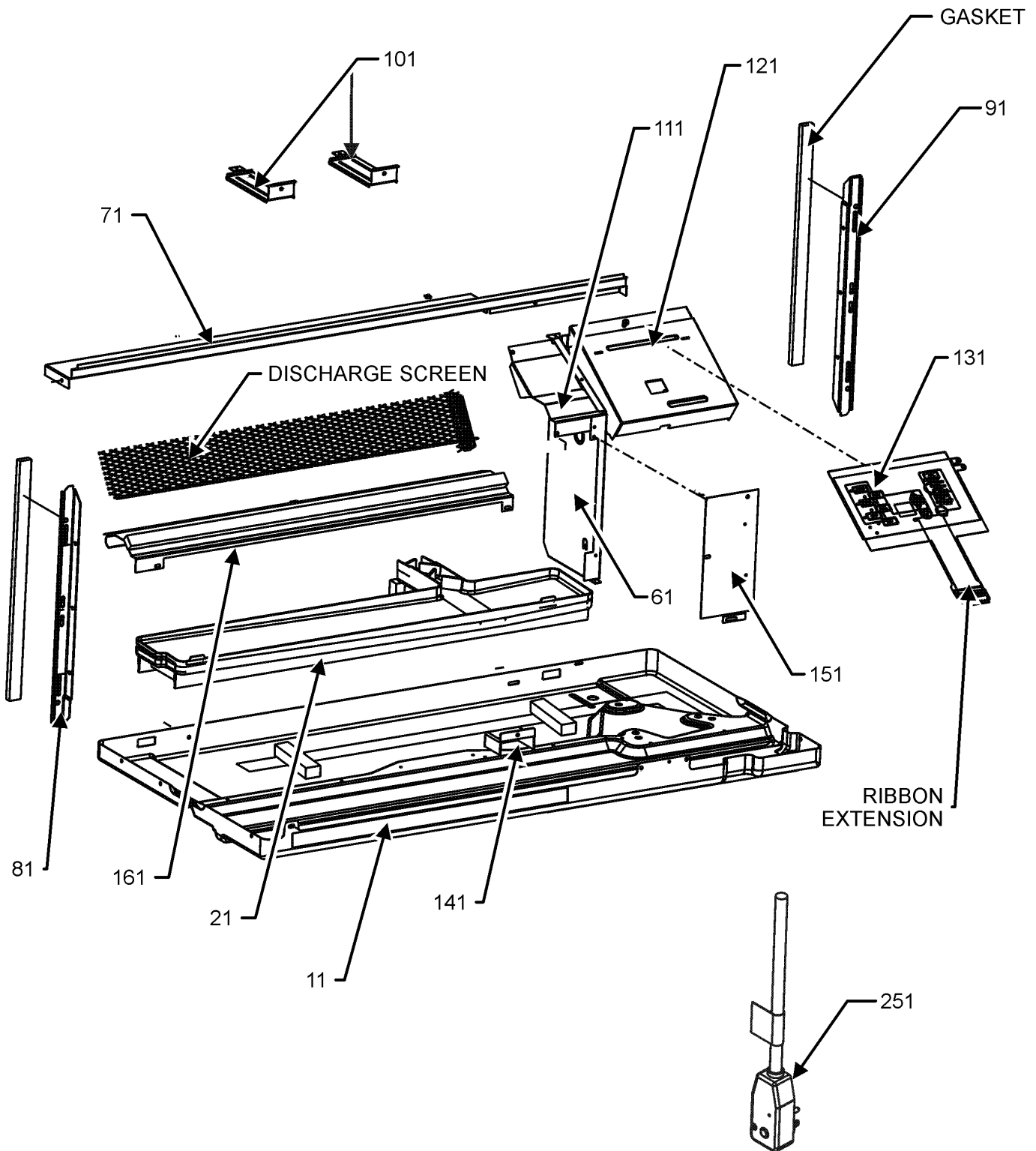
Ref. Part No: No:	Description:	Ref. Part No: No:	Description:
Image 1:			
11	0161P00053		SHROUD, CONDENSER
21	0131P00030		FAN MOTOR, OUTDOOR DC
31	0121P00093		PANEL-PARTITION (M4, M5, M16, M17)
31	0121P00108NG		PANEL-PARTITION (M1, M2, M3, M6, M7, M8, M9, M10, M11, M12, M13, M14, M15, M18)
41	0161P00055		FAN, CONDENSER
51	C6300502		CAPACITOR STRAP
61	CAP020000440RP		CAPACITOR
71	802007090		TERM BOARD
81	0130P00098		THERMISTOR - OUTDOOR AMBIENT (M18)
91	11046302		LEVER ARM (M1, M2, M6, M7, M8, M9, M10, M11, M12, M14, M15, M18)
101	0163P00019		CABLE (M1, M2, M6, M7, M8, M9, M10, M11, M12, M14, M15, M18)
111	0121P00177NG		DOOR - PNT VENT PTC (M3, M13)
121	0121P00079		BRACKET, VENT DOOR (M3, M13)
131	0121P00072NG		BRACKET, VENT DOOR (M1, M2, M6, M7, M8, M9, M10, M11, M12, M14, M15, M18)
141	11166401		EXTENSION SPRING (M3, M13)
151	CAP400000440CS		CAP, 40 MFD/440V/SINGLE RD
161	0163P00029		CAPACITOR CLAMP
181	11191703		PARTITION PANEL BRACKET (M1, M2, M8, M9, M10, M11, M12, M13, M14, M15, M16, M17, M18)
191	0130P00137		MOTOR (M3, M13)
201	11166201		POWER VENT COVER BRACKET (M3, M13)
211	11166101		POWER VENT MOTOR BRACKET (M3, M13)
251	0121P00091		PANEL-AUXILLIARY (M4, M5, M16, M17)
301	PCBEP101		VARIABLE SPEED TERMINAL BOARD
NS	0130P00133		HUMIDITY SENSOR (M3, M13)

Expanded Model Nomenclature

M1 - PTC173G00AXXXBA
M2 - PTC173G00AXXXBB
M3 - PTC173G00DHXXBB
M4 - PTC173G00HQXXBA
M5 - PTC173G00HQXXBB
M6 - PTC173G00HXXXBA
M7 - PTC173G00HXXXBB
M8 - PTC173G25AXXXBB
M9 - PTC173G35AXXXBA
M10 - PTC173G35AXXXBB
M11 - PTC173G35CXXXBA
M12 - PTC173G35CXXXBB
M13 - PTC173G35VXXXBB
M14 - PTC173G50AXXXBA
M15 - PTC173G50AXXXBB
M16 - PTC173G50QXXXBA
M17 - PTC173G50QXXXBB
M18 - PTC173G50RXXXBB

Base Pan Assembly

BASE PAN ASSEMBLY



Base Pan Assembly

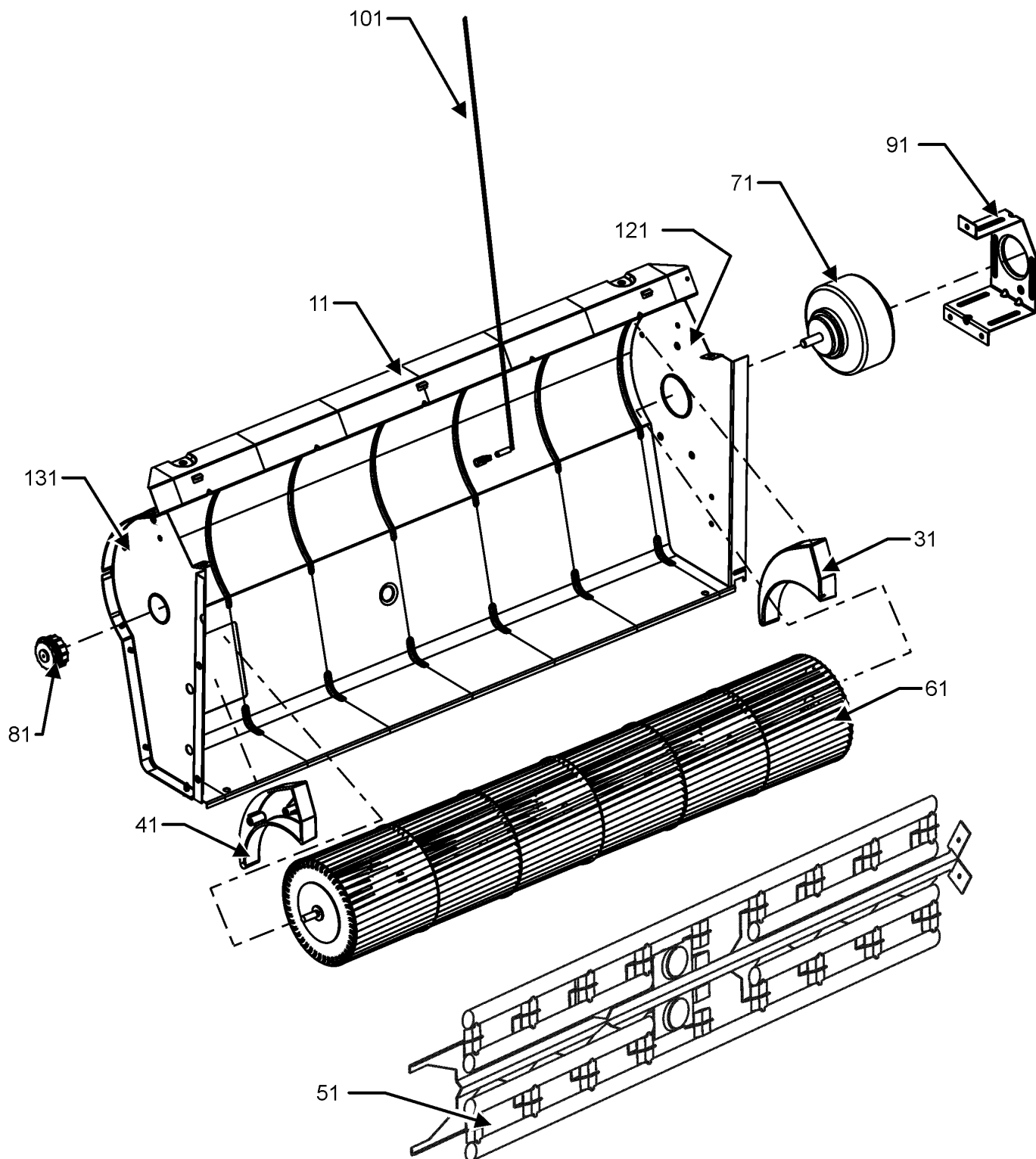
Ref. Part No: No:	Description:	Ref. Part No: No:	Description:
Image 1:			
11	0121P00175DG		BASE PAN, PNT (M1, M2, M3, M4, M5, M6, M7, M8, M9, M10, M13, M14, M15, M16, M17, M18)
11	0121P00175NG		BASEPAN (M11, M12)
21	0161P00044		PLASTIC-DRAIN PAN
61	20403301		MID PARTITION PANEL
71	0121P00063NG		TOP, PARTITION PANEL
81	0121P00197		SEAL-L SIDE PTC
91	0121P00198		SEAL-R SIDE PTC
101	0121P00071NG		BRACE, TIE (QTY 2)
111	0121P00070DG		COVER, MOTOR
121	0121P00129		COVER-CONTROL PANEL
131	RSKP0015		CONTROL PANEL COVER AND MEMBRANE
141	0161P00016		PLASTIC-HOOD (M1, M2, M3, M6, M7, M8, M9, M10, M11, M12, M13, M14, M15, M18)
151	20410801		ACCESS COVER
161	0121P00061DG		CUTOFF-SCROLL DG
251	0130P00112		CORD,250VAC,15A (LCD) (M1, M2, M3, M4, M5, M6, M7, M8)
251	0130P00115		CORD,250VAC,20A (LCD) (M9, M10, M11, M12, M13)
251	0130P00118		CORD,250VAC,30A (LCD) (M14, M15, M16, M17, M18)
NS	0130P00109		MEMBRANE (CONTROL)

Expanded Model Nomenclature

M1 - PTC173G00AXXXBA
 M2 - PTC173G00AXXXBB
 M3 - PTC173G00DHXXBB
 M4 - PTC173G00HQXXBA
 M5 - PTC173G00HQXXBB
 M6 - PTC173G00HXXXBA
 M7 - PTC173G00HXXXBB
 M8 - PTC173G25AXXXBB
 M9 - PTC173G35AXXXBA
 M10 - PTC173G35AXXXBB
 M11 - PTC173G35CXXXBA
 M12 - PTC173G35CXXXBB
 M13 - PTC173G35VXXXBB
 M14 - PTC173G50AXXXBA
 M15 - PTC173G50AXXXBB
 M16 - PTC173G50QXXXBA
 M17 - PTC173G50QXXXBB
 M18 - PTC173G50RXXXBB

Indoor Blower Assembly

INDOOR BLOWER ASSEMBLY



Indoor Blower Assembly

Ref. Part No: No:	Description:	Ref. Part No: No:	Description:
----------------------	--------------	----------------------	--------------

Image 1:

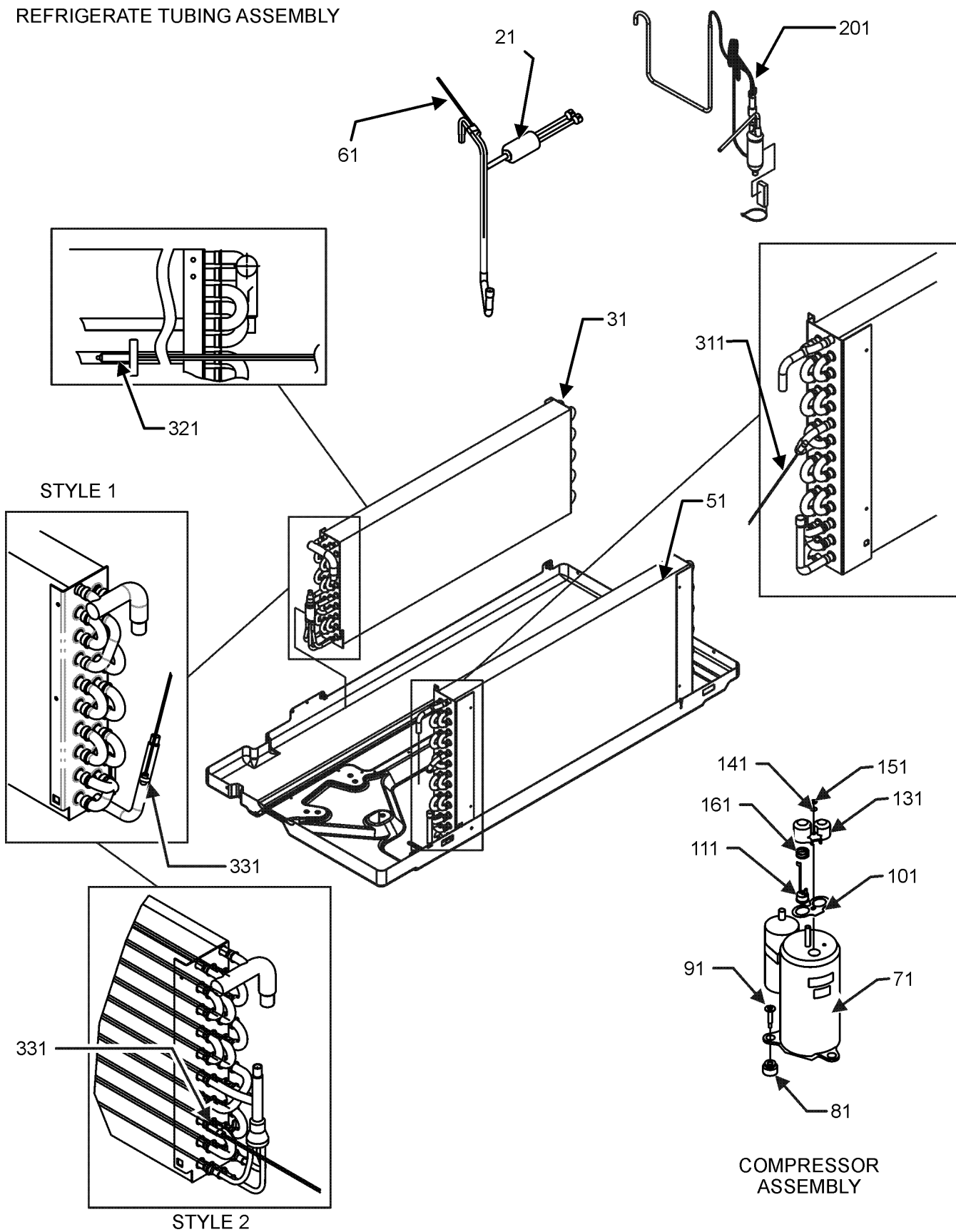
11	0121P00173DG	SCROLL
31	0161P00021	END CAP, RIGHT
41	0161P00022	END CAP, LEFT
51	0275P00019	HEATER ASSY (M8)
51	0275P00038	HEATER ASSY (M9, M10, M11, M12, M13)
51	0275P00039	HEATER ASSY (M14, M15, M16, M17, M18)
61	0150P00004	WHEEL, BLOWER
71	0131P00036	FAN MOTOR, INDOOR
81	0163P00027	BEARING
91	0121P00048	BRACKET-MOTOR MOUNT
101	0130P00134	THERMISTOR - DISCHARGE
121	0121P00059DG	ENDPLATE-RH SCROLL
131	0121P00215DG	ENDPLATE-LH SCROLL, PNT

Expanded Model Nomenclature

M1 - PTC173G00AXXXBA
 M2 - PTC173G00AXXXBB
 M3 - PTC173G00DHXXBB
 M4 - PTC173G00HQXXBA
 M5 - PTC173G00HQXXBB
 M6 - PTC173G00HXXXBA
 M7 - PTC173G00HXXXBB
 M8 - PTC173G25AXXXBB
 M9 - PTC173G35AXXXBA
 M10 - PTC173G35AXXXBB
 M11 - PTC173G35CXXXBA
 M12 - PTC173G35CXXXBB
 M13 - PTC173G35VXXXBB
 M14 - PTC173G50AXXXBA
 M15 - PTC173G50AXXXBB
 M16 - PTC173G50QXXXBA
 M17 - PTC173G50QXXXBB
 M18 - PTC173G50RXXXBB

Refrigerate Tubing Assembly

REFRIGERATE TUBING ASSEMBLY



Refrigerate Tubing Assembly

Ref. Part No: No:	Description:	Ref. Part No: No:	Description:
----------------------	--------------	----------------------	--------------

Image 1:

21	0130M00239	SWITCH, HIGH PRESS
31	0202P00065	EVAP ASSY, 5/16, 3 ROW
51	0201P00097	7 MM CONDENSER COIL ASSY (M2, M3, M5, M7, M8, M10, M13, M15, M17, M18)
51	0201P00105NG	7MM CONDENSER ASSEMBLY PAINTED (M12)
51	0201P00079	CONDENSER ASSY (M1, M4, M6, M9, M14, M16)
51	0201P00083NG	CONDENSER ASSY PNT (M11)
61	0130P00077	THERMISTOR (M18)
71	50A422Q	COMPRESSOR, RECHI
81	60140209	COMPRESSOR GROMMET (QTY 3)
91	M0253610	SHOULDER SCREW (QTY 3)
101	60100103	TERMINAL GASKET
111	60343611	OVERLOAD PROTECTOR-RECHI
131	60100314	TERMINAL COVER - RECHI COMP
141	60100201	WASHER - RECHI COMPRESSOR
151	60100401	TERMINAL NUT - RECHI COMP
161	60500101	OLP SPRING - RECHI COMPRESSOR
201	0210P00249	CAPILLARY WELDMENT (M1, M4, M6, M9, M11, M14, M16)
201	0210P00305	CAPILLARY WELDMENT (M2, M3, M5, M7, M8, M10, M12, M13, M15, M17, M18)
311	0130P00094	THERMISTOR (M18)
321	0130P00144	THERMISTOR
331	0130P00142	THERMISTOR

Expanded Model Nomenclature

M1 - PTC173G00AXXXBA
 M2 - PTC173G00AXXXBB
 M3 - PTC173G00DHXXBB
 M4 - PTC173G00HQXXBA
 M5 - PTC173G00HQXXBB
 M6 - PTC173G00HXXXBA
 M7 - PTC173G00HXXXBB
 M8 - PTC173G25AXXXBB
 M9 - PTC173G35AXXXBA
 M10 - PTC173G35AXXXBB
 M11 - PTC173G35CXXXBA
 M12 - PTC173G35CXXXBB
 M13 - PTC173G35VXXXBB
 M14 - PTC173G50AXXXBA
 M15 - PTC173G50AXXXBB
 M16 - PTC173G50QXXXBA
 M17 - PTC173G50QXXXBB
 M18 - PTC173G50RXXXBB