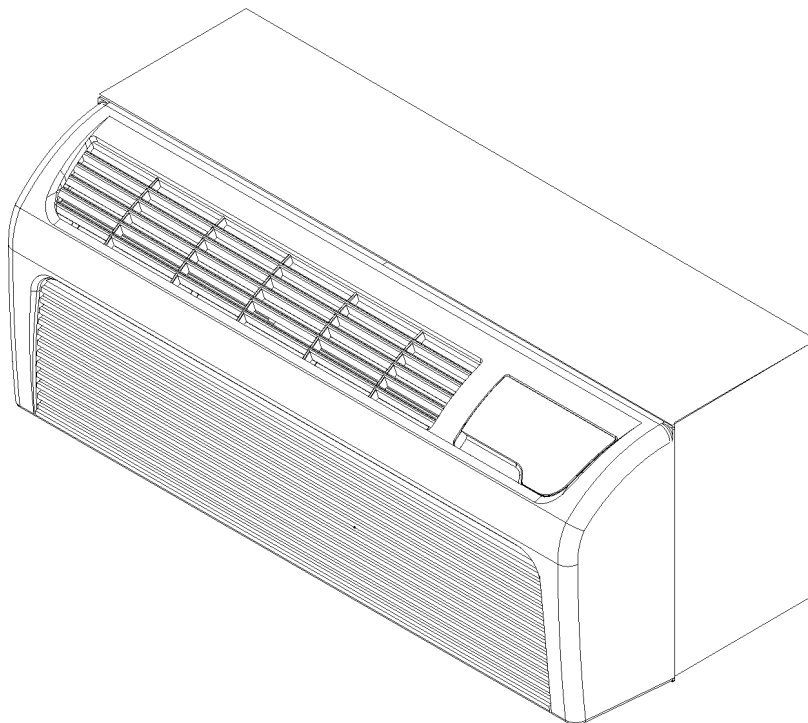


PTC153*DA Packaged Terminal Air Conditioners

PTC153D00ARDA
PTC153D00CRDA
PTC153D15ARDA
PTC153D25ARDA
PTC153D25RRDA
PTC153D35ARDA
PTC153D35AZDA
PTC153D35CRDA
PTC153D35RRDA
PTC153D35RZDA
PTC153D50ARDA
PTC153D50AZDA
PTC153D50CRDA
PTC153D50RRDA
PTC153D50RZDA



Amana is a trademark of Maytag Corporation and used under license to Goodman Company, L.P. All rights reserved.

This manual is to be used by qualified technicians only.

This manual replaces RP-533.

© 2008-2009 Goodman Company, L.P. ♦ 5151 San Felipe, Suite 500 ♦ Houston, TX 77056

Important Information

Index

Functional Parts List	3
Illustration and Parts	4 - 9

Views shown are for parts illustrations only, not servicing procedures.

Rev. A: Added model PTC153D00CRDA.

Text Codes:

AR - As Required

NA - Not Available

NS - Not Shown

00000000 - See Note

QTY - Quantity Example (QTY 3) (If Quantity not shown, Quantity = 1)

M - Model Example (M1) (If M Code not shown, then part is used on all Models)

Expanded Model Nomenclature:

Example M1 - Model#1 M2 - Model#2 M3 - Model#3

Goodman Company, L.P. is not responsible for personal injury or property damage resulting from improper service. Review all service information before beginning repairs.

Warranty service must be performed by an authorized technician, using authorized factory parts. If service is required after the warranty expires, Goodman Company, L.P. also recommends contacting an authorized technician and using authorized factory parts.

Goodman Company, L.P. reserves the right to discontinue, or change at any time, specifications or designs without notice or without incurring obligations.

For assistance within the U.S.A. contact:

Consumer Affairs Department
Goodman Company, L.P.
7401 Security Way
Houston, Texas 77040
877-254-4729-Telephone
713-863-2382-Facsimile

For assistance outside the U.S.A. contact:

International Division
Goodman Company, L.P.
7401 Security Way
Houston, Texas 77040
713-861-2500-Telephone
713-863-2382-Facsimile

Functional Parts

Part

No: Description:

CAP050350370RSS	CAPACITOR 5/35/370V [CONTROL BOX]
48R362AL-5AS	COMPRESSOR-RECHI
RSKP0010	CONTROL BOARD, M61 WIRELESS KIT
0130P00038	THERMISTOR-DISCHARGE
20295709	THERMISTOR-HEAT PUMP (M7, M10, M12, M15)
0130P00046	THERMISTOR-INDOOR AMBIENT
20295707	THERMISTOR-INDOOR COIL
0130P00039	THERMISTOR-OUTDOOR AMBIENT (M7, M10, M12, M15)
20512501	TRANSFORMER

SPECIAL PARTS

20490201	INSPECTION SHEET-SLEEVE/DRAIN
IO-266	INSTAL. INSTR. PTAC CHASSIS
IO-692A	INSTRUCTIONS, INSTALL
RP-533A	REPAIR PARTS MANUAL
IO-293B	USERS MANUAL

Expanded Model Nomenclature

M1 - PTC153D00ARDA
M2 - PTC153D00CRDA
M3 - PTC153D15ARDA
M4 - PTC153D25ARDA
M5 - PTC153D25RRDA
M6 - PTC153D35ARDA
M7 - PTC153D35AZDA
M8 - PTC153D35CRDA
M9 - PTC153D35RRDA
M10 - PTC153D35RZDA
M11 - PTC153D50ARDA
M12 - PTC153D50AZDA
M13 - PTC153D50CRDA
M14 - PTC153D50RRDA
M15 - PTC153D50RZDA

Replacement Parts List

Image 1

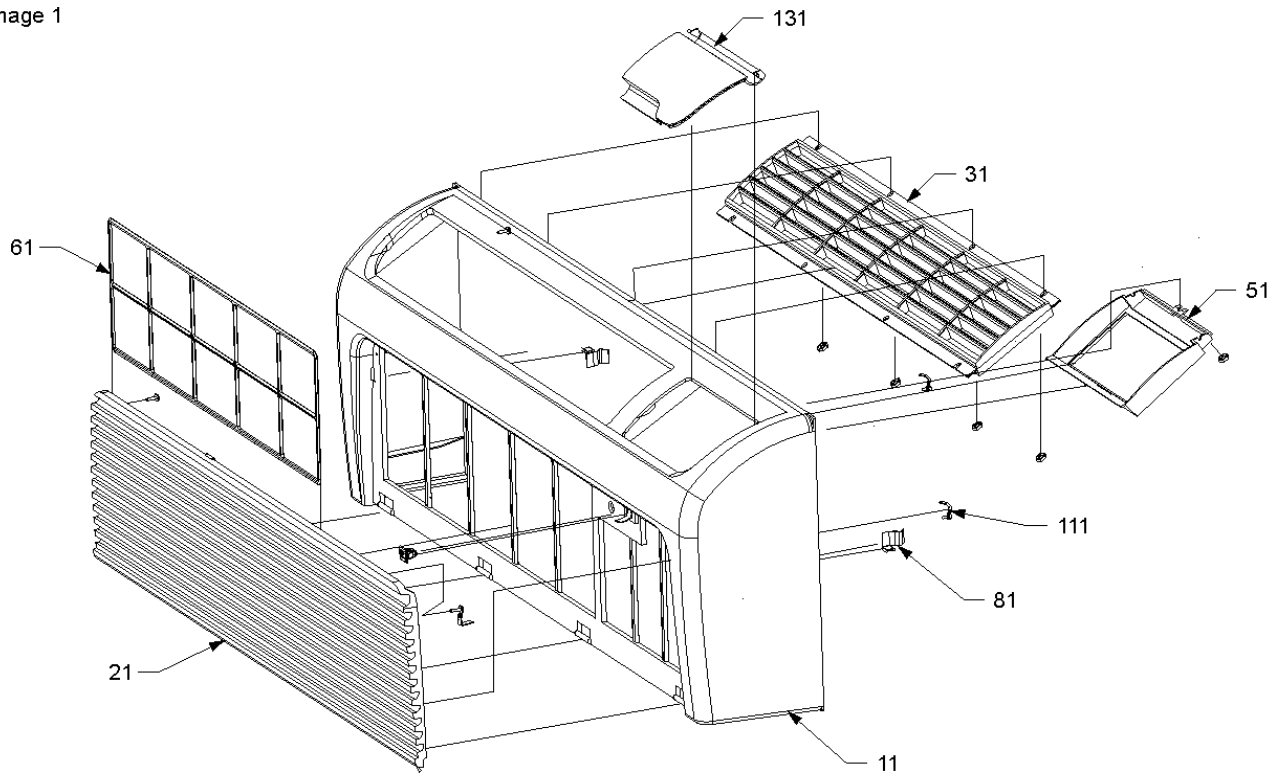
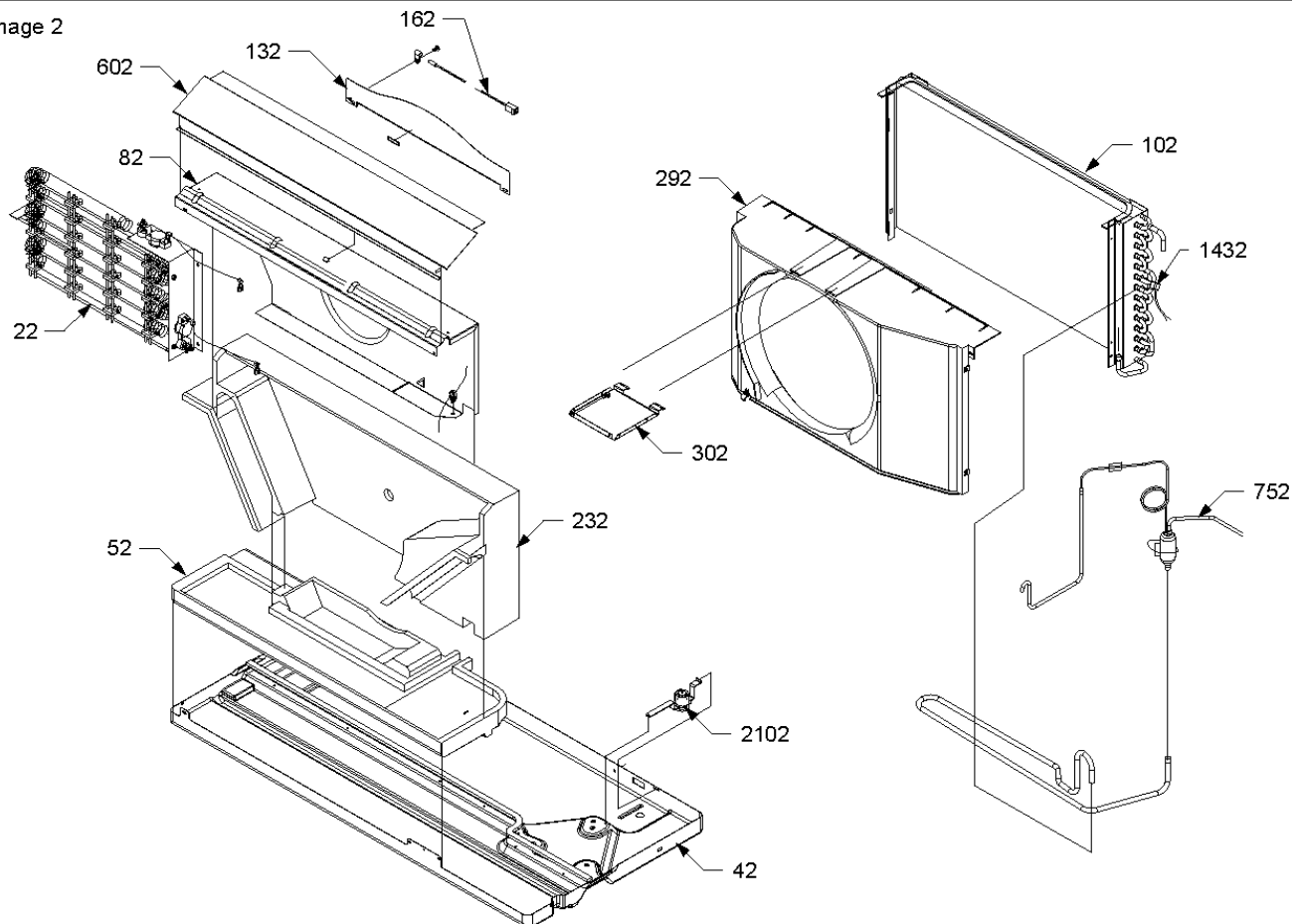


Image 2



Replacement Parts List

Ref. Part No: No:	Description:	Ref. Part No: No:	Description:
----------------------	--------------	----------------------	--------------

Image 1: FRONT ASSY

11	0261P00000A	FRONT FRAME
21	20415402	INTAKE GRILLE
31	20415301	EXHAUST GRILLE
51	20415601	CONTROL HOUSING
61	20415801	FILTER
81	11045102	SIDE CLIP (QTY 2)
111	0161P00002P	STRAP-INLET GRILLE RESTRAINT (QTY 2)
131	20415901	DOOR ASSY

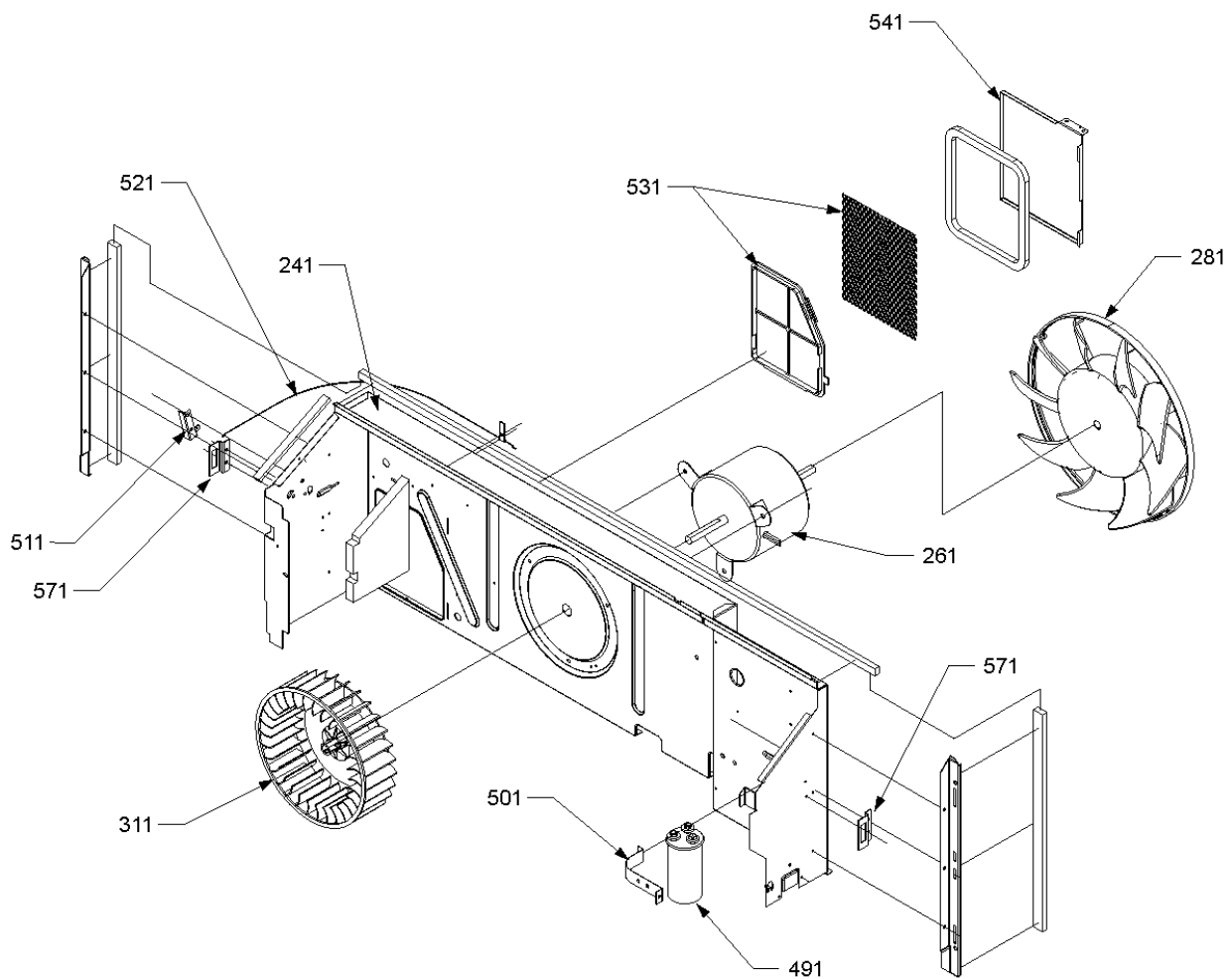
Image 2: BASEPAN ASSY

22	22312901	HEATER 3 1.5 KW ASSY (M3)
22	22312902	HEATER 3 2.5 KW ASSY (M4, M5)
22	22312903	HEATER 3 3.5 KW ASSY (M6, M7, M8, M9, M10)
22	22312904	HEATER 3 5.0 KW ASSY (M11, M12, M13, M14, M15)
42	20403508	BASE PAN
52	B20403802	EVAPORATOR PAD
82	20364804	BLOWER INTAKE
102	0201P00060S	TUBING ASSY, COND COIL (M1, M3, M4, M5, M6, M7, M9, M10, M11, M12, M14, M15)
102	0201P00063DGS	TUBING ASSY, COND COIL (M2, M8, M13)
132	20515304	BLOWER EXTERNAL INTAKE
162	0130P00038	THERMISTOR-DISCHARGE
232	B20356703	BLOWER SCROLL
292	0161P00015	CONDENSER SHROUD
302	11044201PDG	TIE BRACE
602	11123911	DISCHARGE SCREEN
752	0210P00077	CAPILLARY WELDMENT
1432	20295709	THERMISTOR-HEAT PUMP (M7, M10, M12, M15)
2102	20406303	BASE PAN VALVE (M5, M9, M10, M14, M15)

Expanded Model Nomenclature

M1 - PTC153D00ARDA
 M2 - PTC153D00CRDA
 M3 - PTC153D15ARDA
 M4 - PTC153D25ARDA
 M5 - PTC153D25RRDA
 M6 - PTC153D35ARDA
 M7 - PTC153D35AZDA
 M8 - PTC153D35CRDA
 M9 - PTC153D35RRDA
 M10 - PTC153D35RZDA
 M11 - PTC153D50ARDA
 M12 - PTC153D50AZDA
 M13 - PTC153D50CRDA
 M14 - PTC153D50RRDA
 M15 - PTC153D50RZDA

Replacement Parts List



Replacement Parts List

Ref. Part No: No:	Description:	Ref. Part No: No:	Description:
----------------------	--------------	----------------------	--------------

Image 1: CHASSIS-BACK

241	0121P00041DG	PARTITION PANEL
261	0131P00002S	FAN MOTOR 100 W, 2 SP, 6 PL
281	20414601	CONDENSER FAN
311	11044101	BLOWER WHEEL
491	CAP050350370RSS	CAPACITOR 5/35/370V [CONTROL BOX]
501	C6300502	CAPACITOR STRAP
511	11046302	LEVER ARM
521	11115401	CABLE
531	20304003	PROTECTION SHIELD
541	11046105PDG	VENT DOOR
571	11191703	PARTITION PANEL BRACKET (QTY 2)

Expanded Model Nomenclature

M1 - PTC153D00ARDA
M2 - PTC153D00CRDA
M3 - PTC153D15ARDA
M4 - PTC153D25ARDA
M5 - PTC153D25RRDA
M6 - PTC153D35ARDA
M7 - PTC153D35AZDA
M8 - PTC153D35CRDA
M9 - PTC153D35RRDA
M10 - PTC153D35RZDA
M11 - PTC153D50ARDA
M12 - PTC153D50AZDA
M13 - PTC153D50CRDA
M14 - PTC153D50RRDA
M15 - PTC153D50RZDA

Replacement Parts List

Image 1

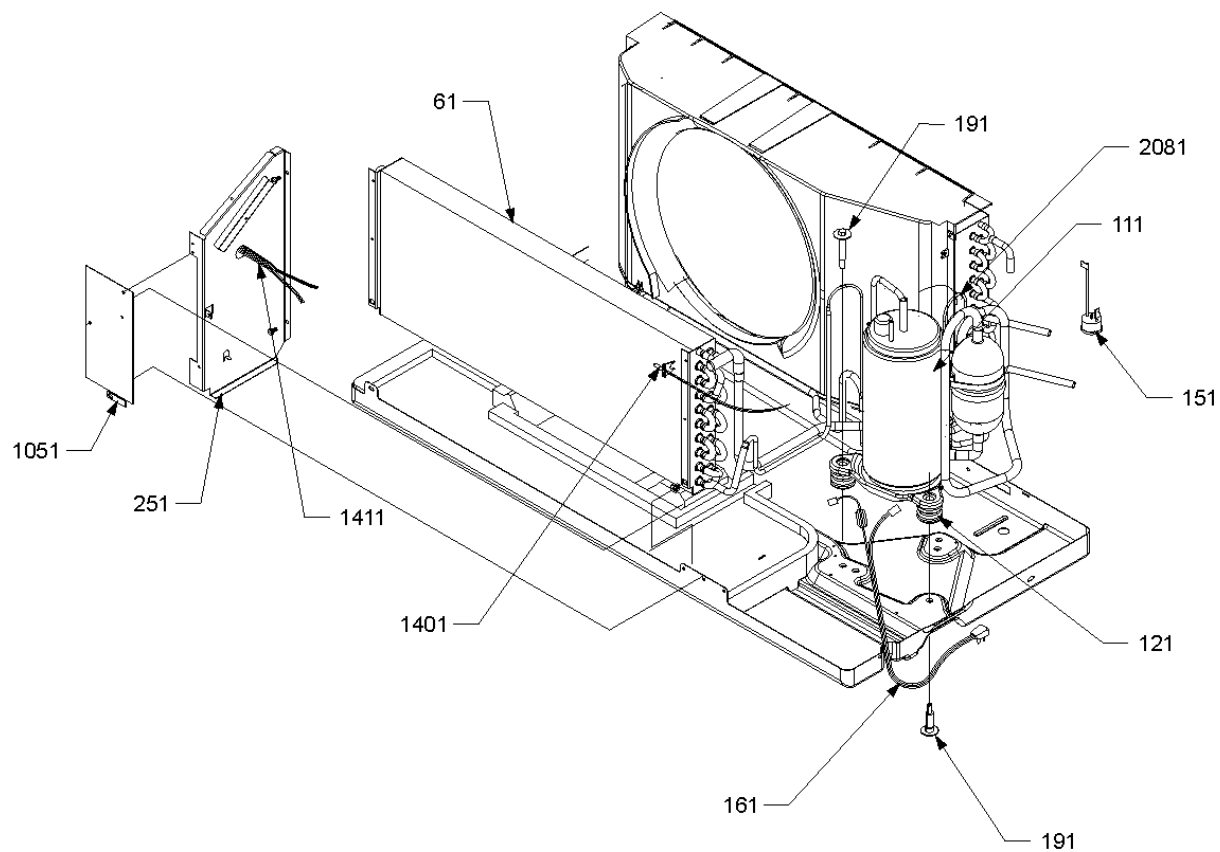
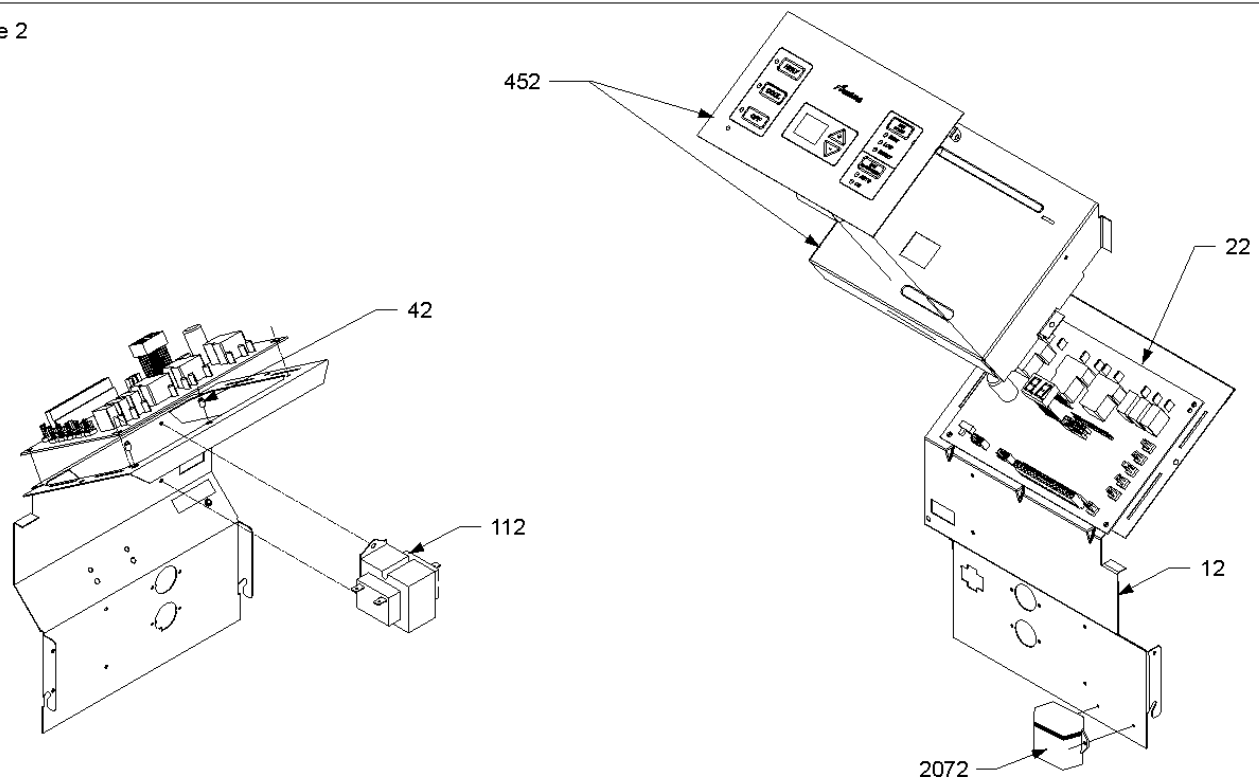


Image 2



Replacement Parts List

Ref. Part No: No:	Description:	Ref. Part No: No:	Description:
----------------------	--------------	----------------------	--------------

Image 1: CHASSIS-FRONT

61	0202P00046S	TUBING ASSY, EVAP COIL
111	48R362AL-5AS	COMPRESSOR-RECHI
121	60140209	GROMMET - RECHI COMPRESSOR (QTY 3)
151	60343528	OVERLOAD PROTECTOR, RECHI
161	0130P00006S	CORD 250 VAC, 15A (LCDI) (M1, M2, M3, M4, M5)
161	0130P00007S	CORD 250 VAC, 20A (LCDI) (M6, M7, M8, M9, M10)
161	0130P00008	CORD 250 VAC, 30A (LCDI) (M11, M12, M13, M14, M15)
191	M0253610	SHOULDER SCREW (QTY 3)
251	20403301	MID PARTITION PANEL
1051	20410801	ACCESS COVER
1401	0130P00046	THERMISTOR-INDOOR AMBIENT
1411	20295707	THERMISTOR-INDOOR COIL
2081	0130P00039	THERMISTOR-OUTDOOR AMBIENT (M7, M10, M12, M15)

Image 2: CONTROL PANEL

12	11044505	CONTROL PANEL
22	RSKP0010	CONTROL BOARD, M61 WIRELESS KIT
42	M0590702	SUPPORT (QTY 2)
112	20512501	TRANSFORMER
452	RSKP0005	CONTROL PANEL COVER AND MEMBRANE
2072	1261401	DIGITENNA (M7, M10, M12, M15)

Expanded Model Nomenclature

M1 - PTC153D00ARDA
 M2 - PTC153D00CRDA
 M3 - PTC153D15ARDA
 M4 - PTC153D25ARDA
 M5 - PTC153D25RRDA
 M6 - PTC153D35ARDA
 M7 - PTC153D35AZDA
 M8 - PTC153D35CRDA
 M9 - PTC153D35RRDA
 M10 - PTC153D35RZDA
 M11 - PTC153D50ARDA
 M12 - PTC153D50AZDA
 M13 - PTC153D50CRDA
 M14 - PTC153D50RRDA
 M15 - PTC153D50RZDA

