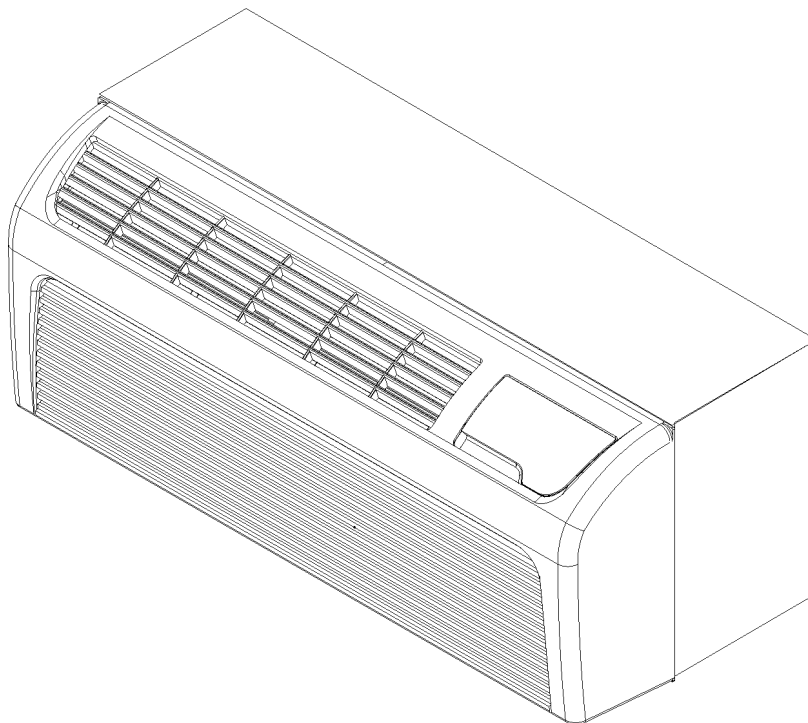


## PTC\*RDA Packaged Terminal Air Conditioners

PTC093D15ARDA  
PTC093D25ARDA  
PTC093D25CRDA  
PTC093D25JRDA  
PTC093D25RRDA  
PTC093D35ARDA  
PTC093D35CRDA  
PTC093D35JRDA  
PTC093D35RRDA  
PTC123D15ARDA  
PTC123D25ARDA  
PTC123D25CRDA  
PTC123D25JRDA  
PTC123D25RRDA  
PTC123D35ARDA  
PTC123D35CRDA  
PTC123D35RRDA  
PTC123D50ARDA  
PTC123D50BRDA  
PTC123D50CRDA  
PTC123D50RRDA  
PTC133D35ARDA



Amana is a registered trademark of Maytag Corporation or its related companies and is used under license to Goodman Company, L.P., Houston, TX. All rights reserved.

This manual is to be used by qualified technicians only.

This manual replaces RP-519A.

© 2008-2009 Goodman Company, L.P. ♦ 5151 San Felipe, Suite 500 ♦ Houston, TX 77056

## Important Information

---

### Index

Functional Parts List .....	3
Illustration and Parts .....	4 - 9

*Views shown are for parts illustrations only, not servicing procedures.*

Rev. B: Added model PTC133D35ARDA.

#### Text Codes:

AR - As Required

NA - Not Available

NS - Not Shown

00000000 - See Note

QTY - Quantity    Example (QTY 3) (If Quantity not shown, Quantity = 1)

M - Model        Example (M1) (If M Code not shown, then part is used on all Models)

#### Expanded Model Nomenclature:

Example M1 - Model#1 M2 - Model#2 M3 - Model#3
---

Goodman Company, L.P. is not responsible for personal injury or property damage resulting from improper service. Review all service information before beginning repairs.

Warranty service must be performed by an authorized technician, using authorized factory parts. If service is required after the warranty expires, Goodman Company, L.P. also recommends contacting an authorized technician and using authorized factory parts.

Goodman Company, L.P. reserves the right to discontinue, or change at any time, specifications or designs without notice or without incurring obligations.

For assistance within the U.S.A. contact:

Consumer Affairs Department  
Goodman Company, L.P.  
7401 Security Way  
Houston, Texas 77040  
877-254-4729-Telephone  
713-863-2382-Facsimile

For assistance outside the U.S.A. contact:

International Division  
Goodman Company, L.P.  
7401 Security Way  
Houston, Texas 77040  
713-861-2500-Telephone  
713-863-2382-Facsimile

# Functional Parts

## Part

## No: Description:

## Expanded Model Nomenclature

CAP050300370RSS	CAPACITOR 5/30/370V
2P19S3R236A-1AS	COMPRESSOR 13000, 208/230/60 (M22)
RSKP0010	CONTROL BOARD, M61 WIRELESS KIT
0131P00002S	FAN MOTOR 100 W, 2 SP, 6 PL (M10, M11, M12, M13, M14, M15, M16, M17, M18, M19, M20, M21, M22)
0131P00000S	FAN MOTOR 40 W, 2 SP, 8 PL (M1, M2, M3, M4, M5, M6, M7, M8, M9)
22312901	HEATER 3 1.5 KW ASSY (M1, M10)
22312902	HEATER 3 2.5 KW ASSY (M2, M3, M4, M5, M11, M12, M13, M14)
22312903	HEATER 3 3.5 KW ASSY (M6, M7, M8, M9, M15, M16, M17, M22)
22312904	HEATER 3 5.0 KW ASSY (M18, M19, M20, M21)
11172801	POWER VENT MOTOR (M4, M8, M13, M19)
44R282AG-5ES	RECHI ROTARY COMPRESSOR 12000 (M10, M11, M12, M13, M14, M15, M16, M17, M18, M19, M20, M21)
44R212AS	RECHI ROTARY COMPRESSOR 9000 (M1, M2, M3, M4, M5, M6, M7, M8, M9)
C8873932	RELAY (POWER VENT) (M4, M8, M13, M19)
B1160701	TERMINAL BOARD (M4, M8, M13, M19)
0130P00038	THERMISTOR-DISCHARGE
0130P00046	THERMISTOR-INDOOR AMBIENT
20295707	THERMISTOR-INDOOR COIL
B1378501	TRANSFORMER (M4, M8, M13, M19)
20512501	TRANSFORMER

M1 - PTC093D15ARDA
M2 - PTC093D25ARDA
M3 - PTC093D25CRDA
M4 - PTC093D25JRDA
M5 - PTC093D25RRDA
M6 - PTC093D35ARDA
M7 - PTC093D35CRDA
M8 - PTC093D35JRDA
M9 - PTC093D35RRDA
M10 - PTC123D15ARDA
M11 - PTC123D25ARDA
M12 - PTC123D25CRDA
M13 - PTC123D25JRDA
M14 - PTC123D25RRDA
M15 - PTC123D35ARDA
M16 - PTC123D35CRDA
M17 - PTC123D35RRDA
M18 - PTC123D50ARDA
M19 - PTC123D50BRDA
M20 - PTC123D50CRDA
M21 - PTC123D50RRDA
M22 - PTC133D35ARDA

## SPECIAL PARTS

IO-692A	CONFIGURATIONS/DIAGNOSTIC CHART (M1, M2, M3, M5, M6, M7, M9, M10, M11, M12, M14, M15, M16, M17, M18, M20, M21, M22)
IO-693A	CONFIGURATIONS/DIAGNOSTIC CHART (M4, M8, M13, M19)
20490201	INSPECTION SHEET-SLEEVE/DRAIN
IO-293C	INSTALLATION INSTRUCTIONS
RP-519B	REPAIR PARTS MANUAL

## Replacement Parts List

Image 1

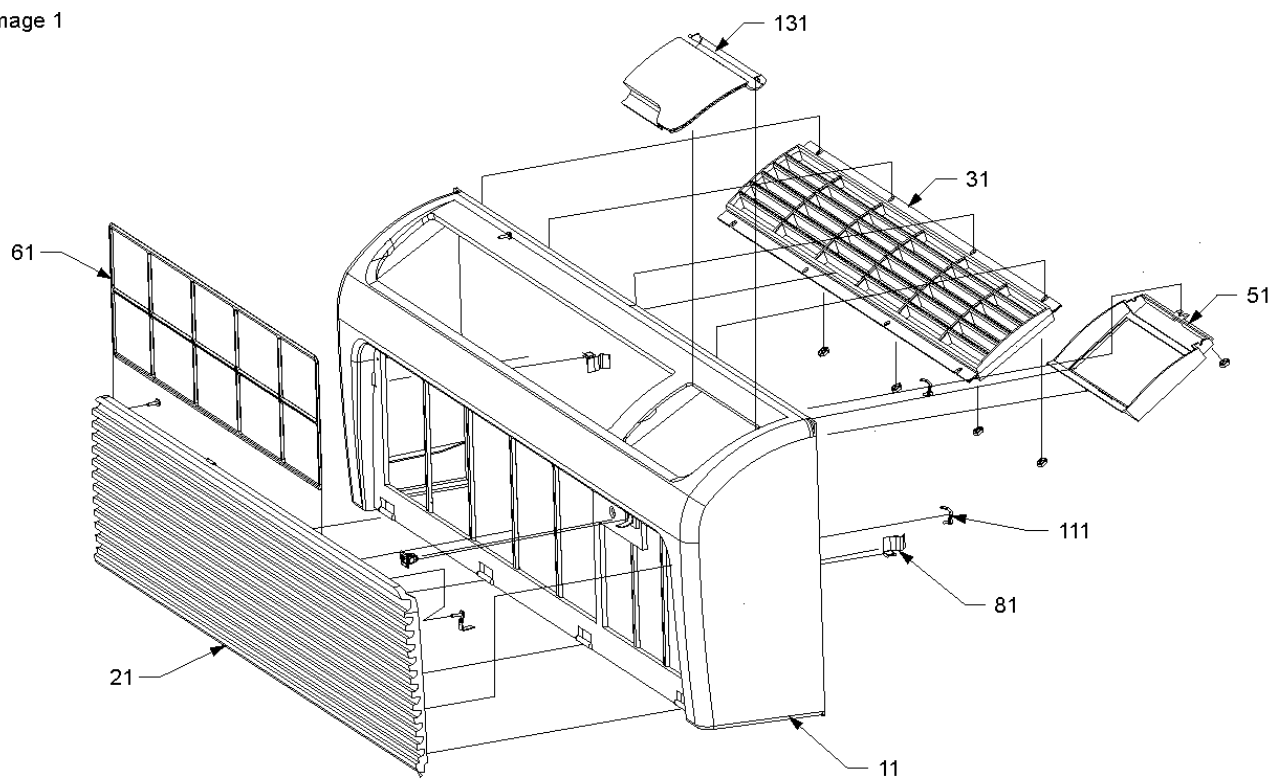
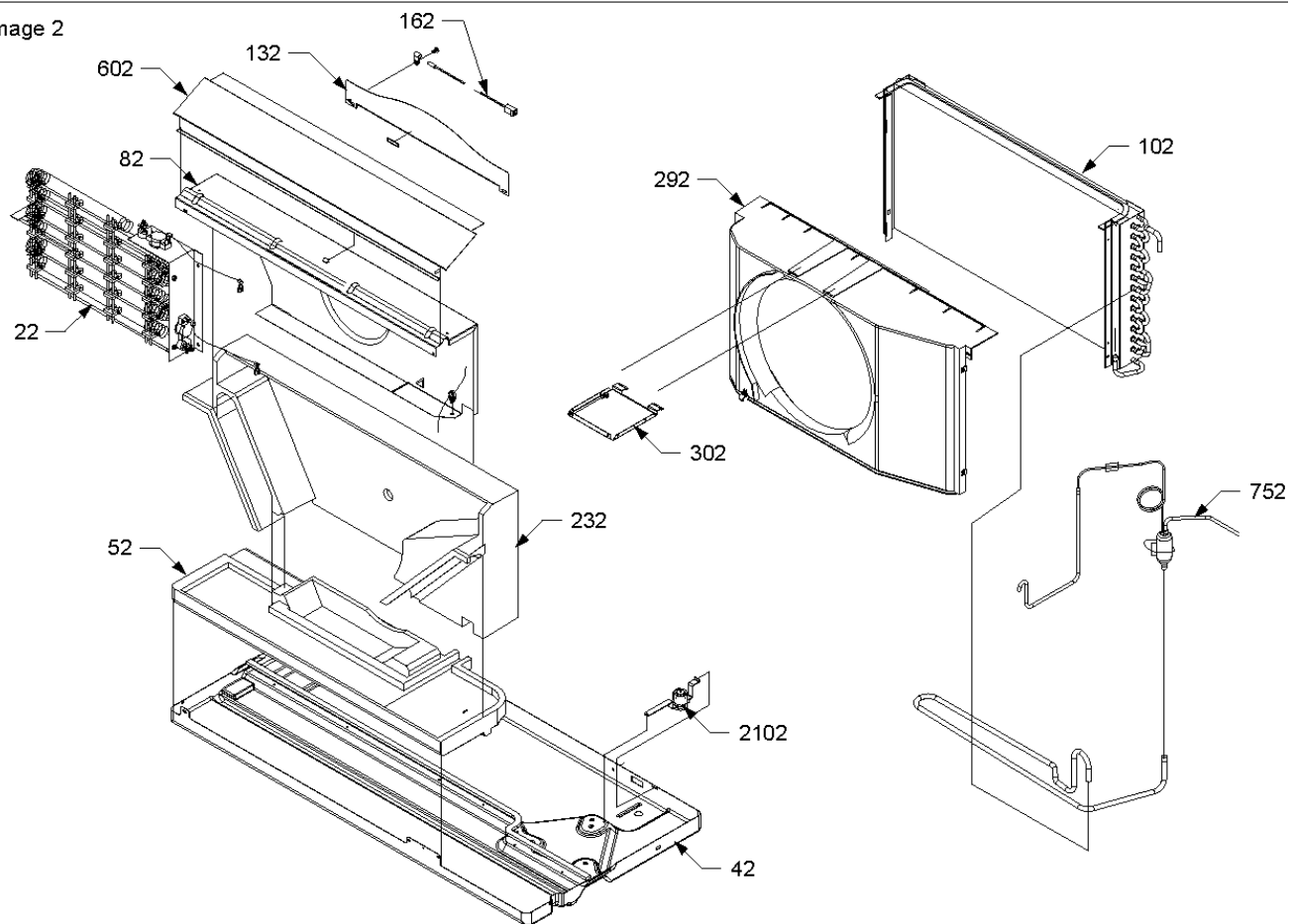


Image 2



# Replacement Parts List

## Ref. Part

No: No:

Description:

## Ref. Part

No: No:

Description:

### Image 1: FRONT ASSY

11	0261P00000A	FRONT FRAME
21	20415402	INTAKE GRILLE
31	20415301	EXHAUST GRILLE
51	20415601	CONTROL HOUSING
61	20415801	FILTER
81	11045102	SIDE CLIP (QTY 2)
111	0161P00002P	STRAP-INLET GRILLE RESTRAINT (QTY 2)
131	20415901	DOOR ASSY

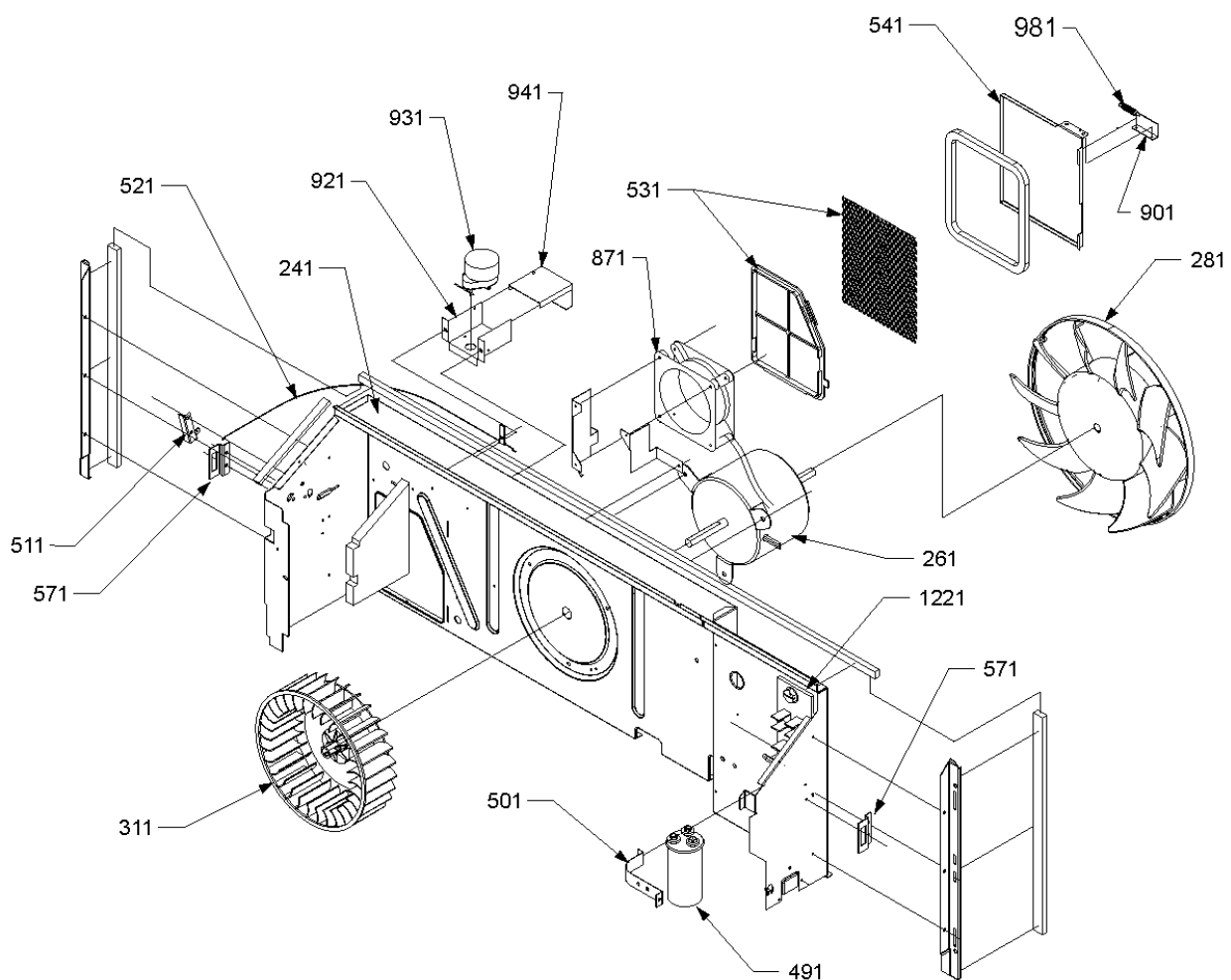
### Image 2: BASEPAN ASSY

22	22312901	HEATER 3 1.5 KW ASSY (M1, M10)
22	22312902	HEATER 3 2.5 KW ASSY (M2, M3, M4, M5, M11, M12, M13, M14)
22	22312903	HEATER 3 3.5 KW ASSY (M6, M7, M8, M9, M15, M16, M17, M22)
22	22312904	HEATER 3 5.0 KW ASSY (M18, M19, M20, M21)
42	20403508	BASE PAN
52	B20403802	EVAPORATOR PAD
82	20364804	BLOWER INTAKE
102	0201P00060S	TUBING ASSY, COND COIL (M1, M2, M4, M5, M6, M8, M9, M10, M11, M13, M14, M15, M17, M18, M19, M21, M22)
102	0201P00063DGS	TUBING ASSY, COND COIL (M3, M7, M12, M16, M20)
132	20515301	EXTERNAL BLOWER INTAKE
162	0130P00038	THERMISTOR-DISCHARGE
292	0161P00015	CONDENSER SHROUD
302	11044201PDG	TIE BRACE
602	11123903	DISCHARGE SCREEN
752	0210P00048	CAPILLARY WELDMENT (M1, M2, M3, M4, M5, M6, M7, M8, M9)
752	0210P00054	CAPILLARY WELDMENT (M10, M11, M12, M13, M14, M15, M16, M17, M18, M19, M20, M21)
752	0210P00091	CAPILLARY WELDMENT (M22)
2102	20406303	BASE PAN VALVE (M5, M9, M14, M17, M21)

### Expanded Model Nomenclature

M1 - PTC093D15ARDA
M2 - PTC093D25ARDA
M3 - PTC093D25CRDA
M4 - PTC093D25JRDA
M5 - PTC093D25RRDA
M6 - PTC093D35ARDA
M7 - PTC093D35CRDA
M8 - PTC093D35JRDA
M9 - PTC093D35RRDA
M10 - PTC123D15ARDA
M11 - PTC123D25ARDA
M12 - PTC123D25CRDA
M13 - PTC123D25JRDA
M14 - PTC123D25RRDA
M15 - PTC123D35ARDA
M16 - PTC123D35CRDA
M17 - PTC123D35RRDA
M18 - PTC123D50ARDA
M19 - PTC123D50BRDA
M20 - PTC123D50CRDA
M21 - PTC123D50RRDA
M22 - PTC133D35ARDA

## Replacement Parts List



# Replacement Parts List

## Ref. Part

No: No:

Description:

## Ref. Part

No: No:

Description:

Image 1: CHASSIS - BACK

231	B20356703	BLOWER SCROLL
241	0121P00041DG	PARTITION PANEL
261	0131P00002S	FAN MOTOR 100 W, 2 SP, 6 PL (M10, M11, M12, M13, M14, M15, M16, M17, M18, M19, M20, M21, M22)
261	0131P00000S	FAN MOTOR 40 W, 2 SP, 8 PL (M1, M2, M3, M4, M5, M6, M7, M8, M9)
281	20414601	CONDENSER FAN
311	11044101	BLOWER WHEEL
491	CAP050300370RSS	CAPACITOR 5/30/370V
501	C6300502	CAPACITOR STRAP
511	11046302	LEVER ARM (M1, M2, M3, M5, M6, M7, M9, M10, M11, M12, M14, M15, M16, M17, M18, M20, M21, M22)
521	11115401	CABLE (M1, M2, M3, M5, M6, M7, M9, M10, M11, M12, M14, M15, M16, M17, M18, M20, M21, M22)
531	20304003	PROTECTION SHIELD
541	11046105PDG	VENT DOOR
571	11191703	PARTITION PANEL BRACKET (QTY 2)
871	11149201	MUFFIN FAN (M19)
901	11166301	POWER VENT BRACKET (M4, M8, M13, M19)
921	11166101	POWER VENT MOTOR BRACKET (M4, M8, M13, M19)
931	11172801	POWER VENT MOTOR (M4, M8, M13, M19)
941	11166201	POWER VENT COVER BRACKET (M4, M8, M13, M19)
981	11166401	EXTENSION SPRING (M4, M8, M13, M19)
1221	B1160701	TERMINAL BOARD (M4, M8, M13, M19)

Expanded Model Nomenclature

M1 - PTC093D15ARDA
M2 - PTC093D25ARDA
M3 - PTC093D25CRDA
M4 - PTC093D25JRDA
M5 - PTC093D25RRDA
M6 - PTC093D35ARDA
M7 - PTC093D35CRDA
M8 - PTC093D35JRDA
M9 - PTC093D35RRDA
M10 - PTC123D15ARDA
M11 - PTC123D25ARDA
M12 - PTC123D25CRDA
M13 - PTC123D25JRDA
M14 - PTC123D25RRDA
M15 - PTC123D35ARDA
M16 - PTC123D35CRDA
M17 - PTC123D35RRDA
M18 - PTC123D50ARDA
M19 - PTC123D50BRDA
M20 - PTC123D50CRDA
M21 - PTC123D50RRDA
M22 - PTC133D35ARDA

# Replacement Parts List

Image 1

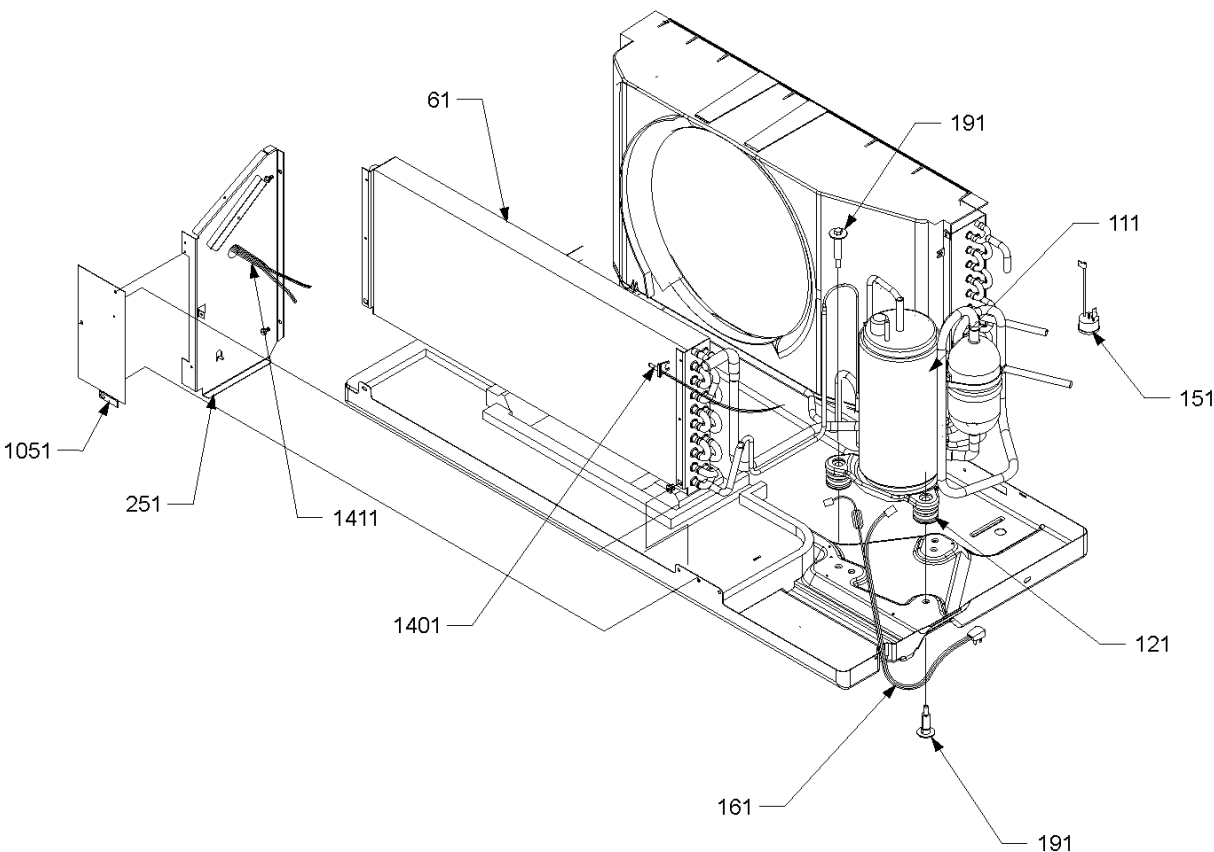
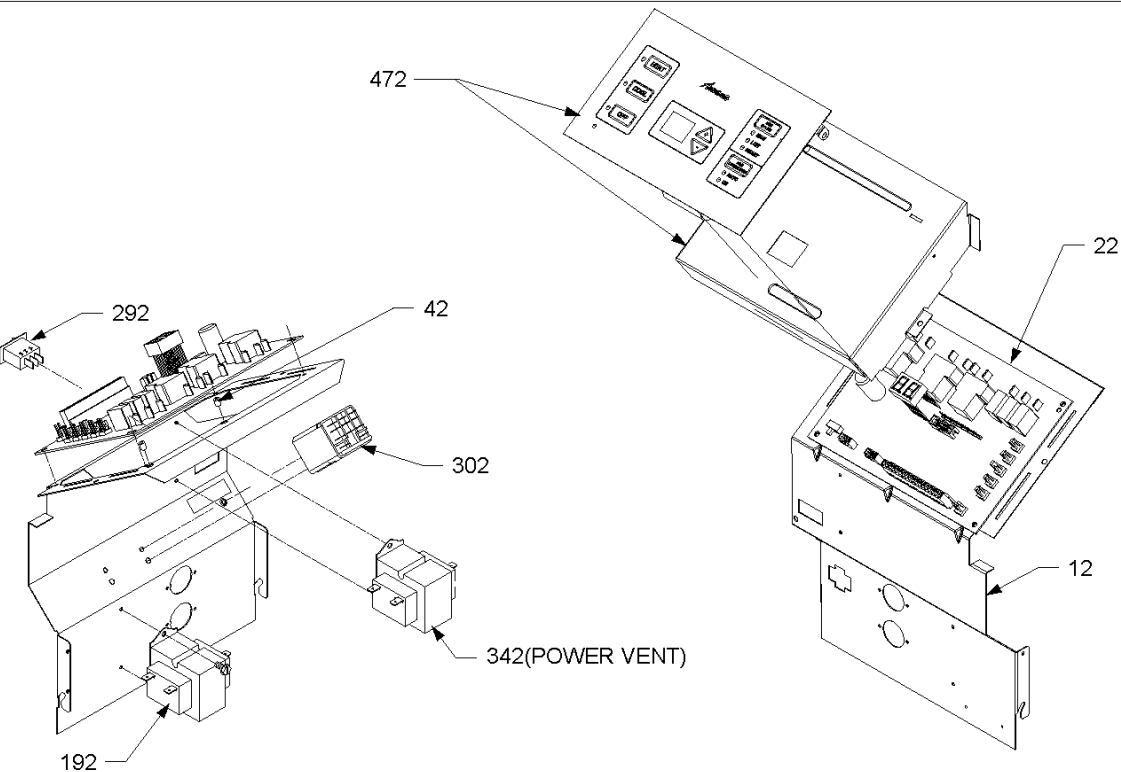


Image 2





# Replacement Parts List

## Ref. Part

No: No:

Description:

## Ref. Part

No: No:

Description:

### Image 1: CHASSIS - FRONT

61	0202P00046S	TUBING ASSY, EVAP COIL
111	2P19S3R236A-1AS	COMPRESSOR 13000, 208/230/60 (M22)
111	44R282AG-5ES	RECHI ROTARY COMPRESSOR 12000 (M10, M11, M12, M13, M14, M15, M16, M17, M18, M19, M20, M21)
111	44R212AS	RECHI ROTARY COMPRESSOR 9000 (M1, M2, M3, M4, M5, M6, M7, M8, M9)
121	A3448602	COMPRESSOR GROMMET (M22)
121	60130203	GROMMET - RECHI COMPRESSOR (M1, M2, M3, M4, M5, M6, M7, M8, M9)
121	60140209	GROMMET - RECHI COMPRESSOR (M10, M11, M12, M13, M14, M15, M16, M17, M18, M19, M20, M21)
151	60343501	OVERLOAD PROTECTOR (M10, M11, M12, M13, M14, M15, M16, M17, M18, M19, M20, M21)
151	60343507	OVERLOAD PROTECTOR (M1, M2, M3, M4, M5, M6, M7, M8, M9)
151	D6961603	OVERLOAD PROTECTOR (M22)
161	0130P00007S	CORD 250 VAC, 20A (LCDI) (M6, M7, M8, M9, M15, M16, M17, M22)
161	0130P00008	CORD 250 VAC, 30A (LCDI)
161	0130P00006S	CORD,250VAC,15A (LCDI) (M1, M2, M3, M4, M5, M10, M11, M12, M13, M14)
191	M0253610	SHOULDER SCREW (M10, M11, M12, M13, M14, M15, M16, M17, M18, M19, M20, M21, M22)
191	M0253661	SHOULDER SCREW (M1, M2, M3, M4, M5, M6, M7, M8, M9)
251	20403301	MID PARTITION PANEL
1051	20410801	ACCESS COVER
1401	0130P00046	THERMISTOR-INDOOR AMBIENT
1411	20295707	THERMISTOR-INDOOR COIL

### Image 2: CONTROL PANEL

12	11044505	CONTROL PANEL
22	RSKP0010	CONTROL BOARD, M61 WIRELESS KIT
42	M0590702	SUPPORT (QTY 2)
192	B1378501	TRANSFORMER (M4, M8, M13, M19)
292	B1337701	PADDLE SWITCH (M4, M8, M13, M19)
302	C8873932	RELAY (POWER VENT) (M4, M8, M13, M19)
342	20512501	TRANSFORMER
472	RSKP0005	CONTROL PANEL COVER AND MEMBRANE

### Expanded Model Nomenclature

M1 - PTC093D15ARDA
M2 - PTC093D25ARDA
M3 - PTC093D25CRDA
M4 - PTC093D25JRDA
M5 - PTC093D25RRDA
M6 - PTC093D35ARDA
M7 - PTC093D35CRDA
M8 - PTC093D35JRDA
M9 - PTC093D35RRDA
M10 - PTC123D15ARDA
M11 - PTC123D25ARDA
M12 - PTC123D25CRDA
M13 - PTC123D25JRDA
M14 - PTC123D25RRDA
M15 - PTC123D35ARDA
M16 - PTC123D35CRDA
M17 - PTC123D35RRDA
M18 - PTC123D50ARDA
M19 - PTC123D50BRDA
M20 - PTC123D50CRDA
M21 - PTC123D50RRDA
M22 - PTC133D35ARDA

