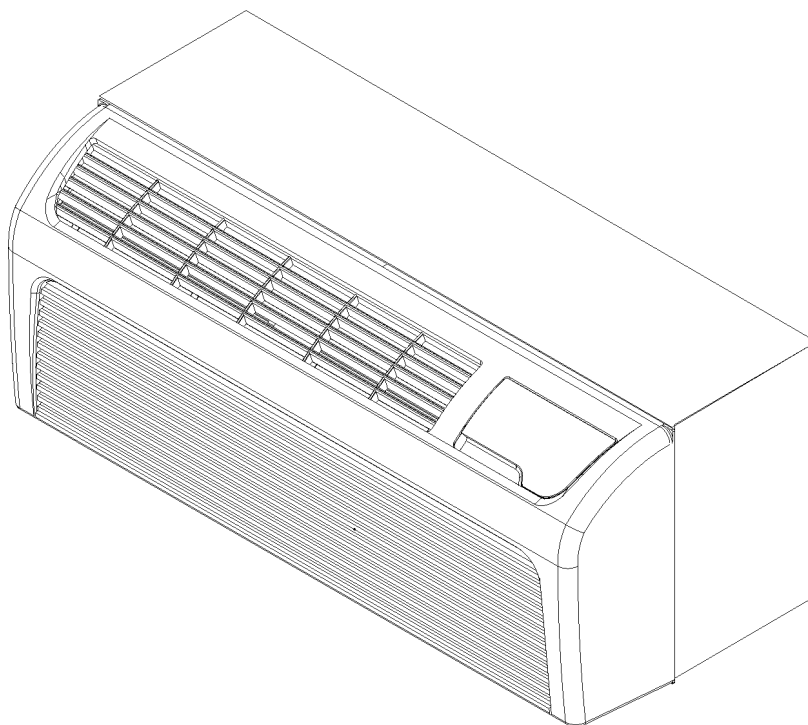


PTC*00*DA Packaged Terminal Air Conditioners

PTC093D00ARDA
PTC093D00CRDA
PTC093D00GHDA
PTC093D00HHDA
PTC123D00ARDA
PTC123D00FHDA
PTC123D00GHDA
PTC123D00HHDA
PTC123D00HZDA



Amana is a trademark of Maytag Corporation and used under license to Goodman Company, L.P. All rights reserved.

This manual is to be used by qualified technicians only.

This manual replaces RP-518.

© 2008 Goodman Company, L.P. ♦ 5151 San Felipe, Suite 500 ♦ Houston, TX 77056

Important Information

Index

Functional Parts List	3
Illustration and Parts	4 - 9

Views shown are for parts illustrations only, not servicing procedures.

Rev. A: Added model PTC123D00HZDA.

Text Codes:

AR - As Required

NA - Not Available

NS - Not Shown

00000000 - See Note

QTY - Quantity Example (QTY 3) (If Quantity not shown, Quantity = 1)

M - Model Example (M1) (If M Code not shown, then part is used on all Models)

Expanded Model Nomenclature:

Example M1 - Model#1 M2 - Model#2 M3 - Model#3

Goodman Company, L.P. is not responsible for personal injury or property damage resulting from improper service. Review all service information before beginning repairs.

Warranty service must be performed by an authorized technician, using authorized factory parts. If service is required after the warranty expires, Goodman Company, L.P. also recommends contacting an authorized technician and using authorized factory parts.

Goodman Company, L.P. reserves the right to discontinue, or change at any time, specifications or designs without notice or without incurring obligations.

For assistance within the U.S.A. contact:

Consumer Affairs Department
Goodman Company, L.P.
7401 Security Way
Houston, Texas 77040
877-254-4729-Telephone
713-863-2382-Facsimile

For assistance outside the U.S.A. contact:

International Division
Goodman Company, L.P.
7401 Security Way
Houston, Texas 77040
713-861-2500-Telephone
713-863-2382-Facsimile

Functional Parts

Part

No: Description:

44R282AG-5ESS	12K RECHI ROTARY COMPRESSOR (M5, M6, M7, M8, M9)
44R121AS	9K RECHI ROTARY COMPRESSOR (M1, M2, M3, M4)
CAP050300370RSS	CAPACITOR 5/30/370V
PCBCP127S	CONTROL BOARD, M61 HYDRONIC (M3, M4, M6, M7, M8)
PCBCP126S	CONTROL BOARD, M61 WIRELESS (M1, M2, M5, M9)
1261401	DIGITENNA (M9)
0131P00002S	FAN MOTOR 100 W, 2 SP, 6 PL (M5, M6, M7, M8, M9)
0131P00000S	FAN MOTOR 40 W, 2 SP, 8 PL (M1, M2, M3, M4)
C8873917	RELAY (HYRDONIC) (M3, M4, M6, M7, M8, M9)
C8873932	RELAY (POWER VENT) (M3, M6, M7)
B1160701	TERMINAL BOARD (M3, M6, M7)
0130P00038	THERMISTOR-DISCHARGE
0130P00046	THERMISTOR-INDOOR AMBIENT
20295707	THERMISTOR-INDOOR COIL
0130P00039	THERMISTOR-OUTDOOR AMBIENT (M9)
20512501	TRANSFORMER (POWER VENT)

SPECIAL PARTS

IO-311	CONFIGURATION SETTINGS (M3, M4, M6, M7, M8, M9)
20490201	INSPECTION SHEET-SLEEVE/DRAIN
IO-266	INSTALLATION INSTRUCTIONS-CHASSIS
RP-518A	REPAIR PARTS MANUAL
IO-293B	USERS MANUAL
IO-692	WIRING DIAGNOSTIC (M1, M2, M5)

Expanded Model Nomenclature

M1 - PTC093D00ARDA
M2 - PTC093D00CRDA
M3 - PTC093D00GHDA
M4 - PTC093D00HHDA
M5 - PTC123D00ARDA
M6 - PTC123D00FHDA
M7 - PTC123D00GHDA
M8 - PTC123D00HHDA
M9 - PTC123D00HZDA

Replacement Parts List

Image 1

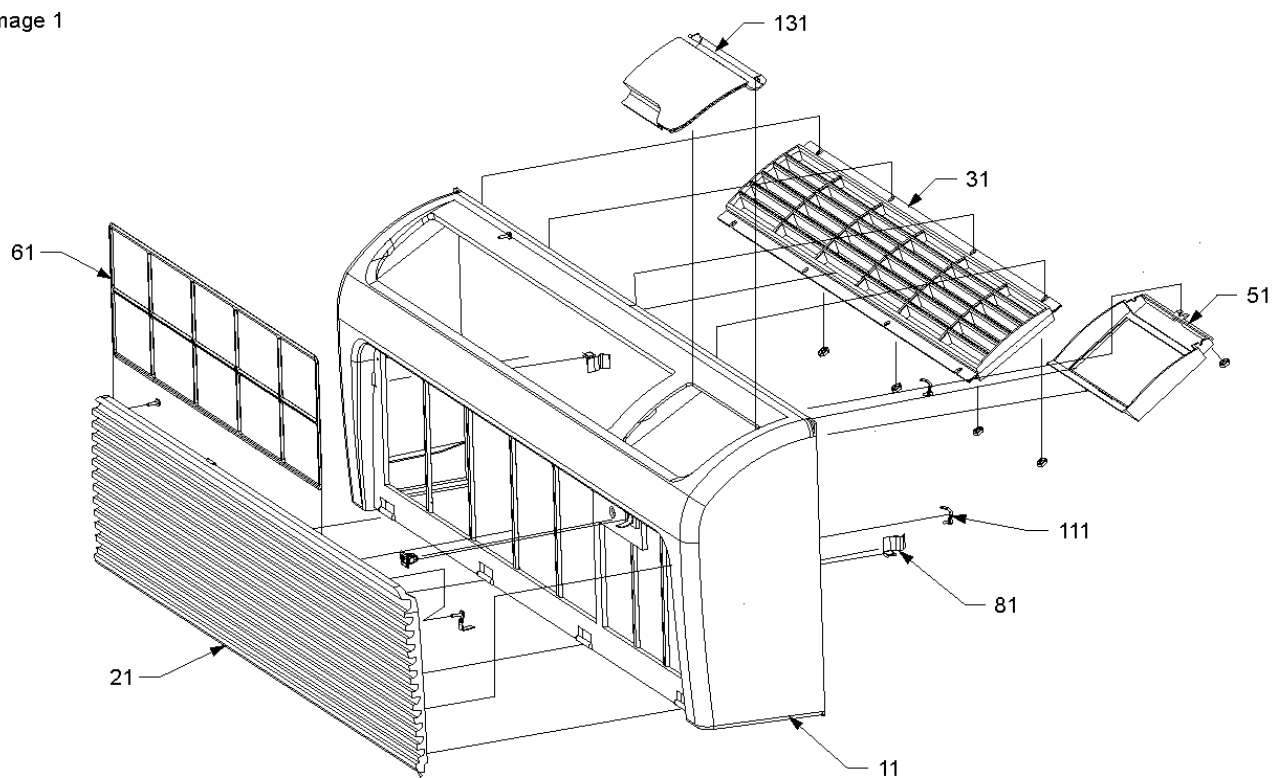
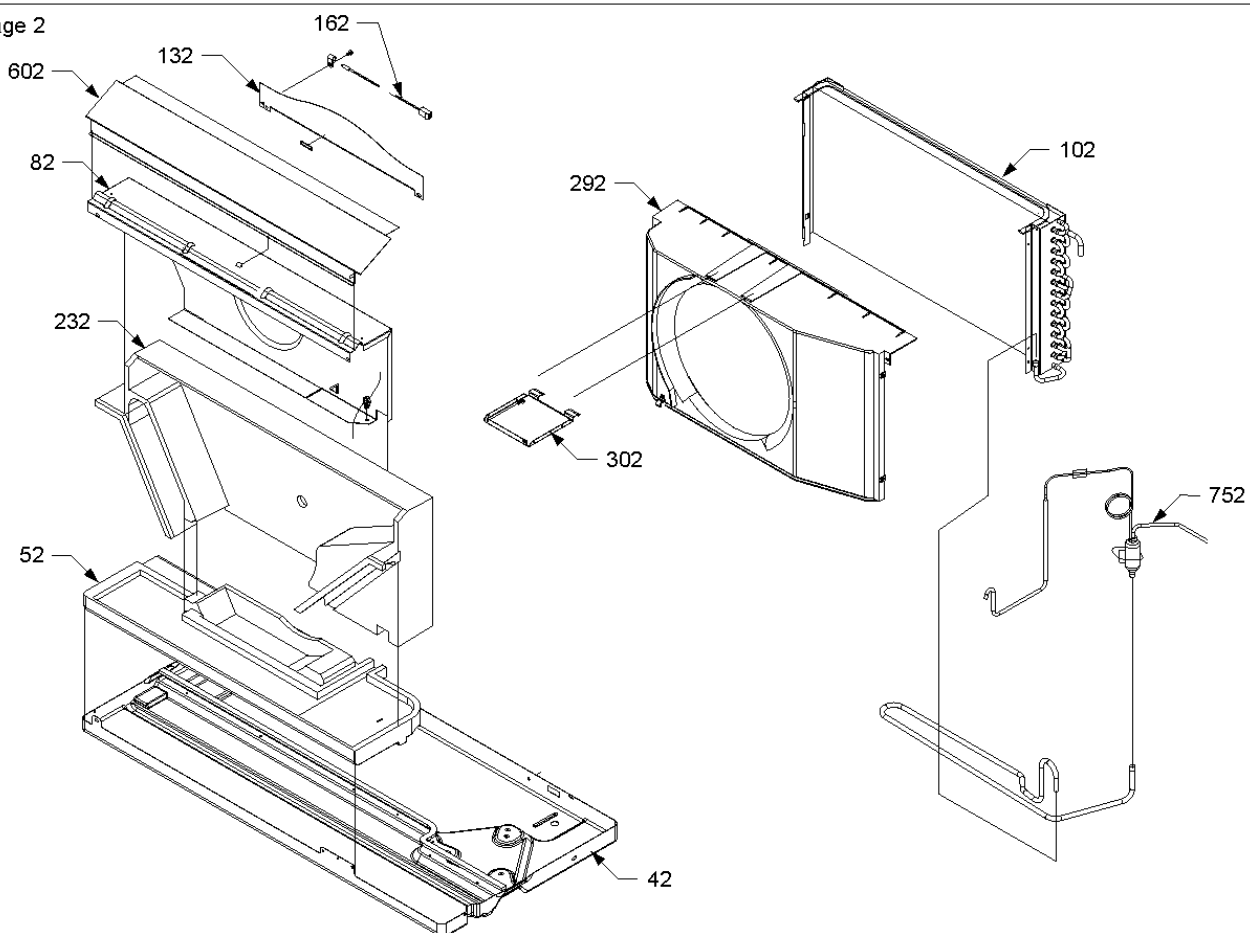


Image 2



Replacement Parts List

Ref. Part No: No:	Description:	Ref. Part No: No:	Description:
----------------------	--------------	----------------------	--------------

Image 1: FRONT ASSY

11	0261P00000A	FRONT FRAME (M1, M2, M5)
21	20415402	INTAKE GRILLE (M1, M2, M5)
31	20415301	EXHAUST GRILLE (M1, M2, M5)
51	20415601	CONTROL HOUSING (M1, M2, M5)
61	20415801	FILTER (M1, M2, M5)
81	11045102	SIDE CLIP (M1, M2, M5)
111	0161P00002P	STRAP-INLET GRILLE RESTRAINT (M1, M2, M5)
131	20415901	DOOR ASSY (M1, M2, M5)

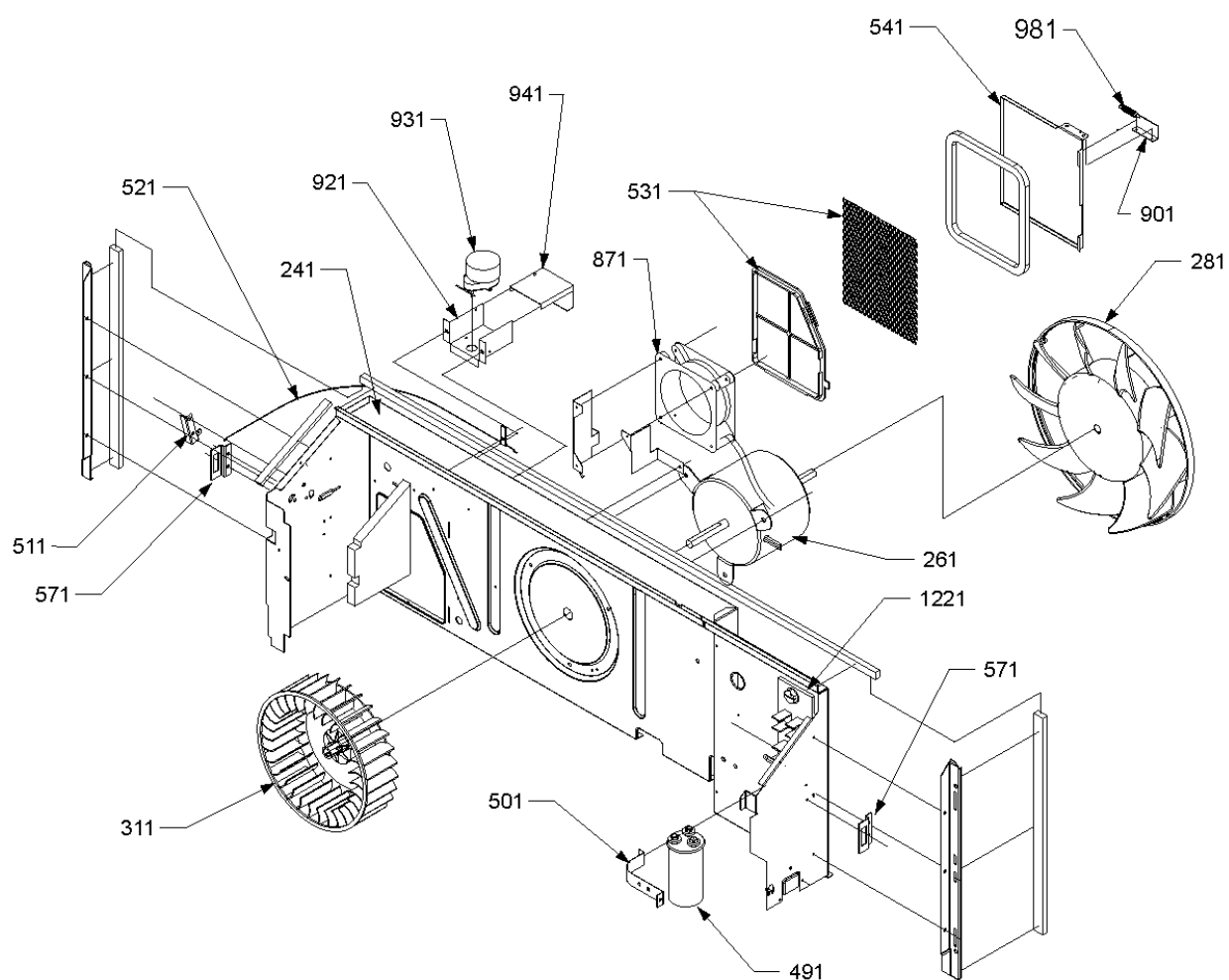
Image 2: BASEPAN ASSY

42	20403508	BASE PAN
52	B20403802	EVAPORATOR PAD
82	20364804	BLOWER INTAKE
102	0201P00060S	TUBING ASSY, COND COIL (M1, M3, M4, M5, M6, M7, M8, M9)
102	0201P00063DGS	TUBING ASSY, COND COIL (M2)
132	20515304	BLOWER EXTERNAL INTAKE
162	0130P00038	THERMISTOR-DISCHARGE
232	20356702	BLOWER SCROLL
292	0161P00015	CONDENSER SHROUD
302	11044201PDG	TIE BRACE
602	11123911	DISCHARGE SCREEN (M1, M2, M5)
752	0210P00048	CAPILLARY WELDMENT (M1, M2, M3, M4)
752	0210P00054	CAPILLARY WELDMENT (M5, M6, M7, M8, M9)

Expanded Model Nomenclature

M1 - PTC093D00ARDA
M2 - PTC093D00CRDA
M3 - PTC093D00GHDA
M4 - PTC093D00HHDA
M5 - PTC123D00ARDA
M6 - PTC123D00FHDA
M7 - PTC123D00GHDA
M8 - PTC123D00HHDA
M9 - PTC123D00HZDA

Replacement Parts List



Replacement Parts List

Ref. Part No: No:	Description:	Ref. Part No: No:	Description:
----------------------	--------------	----------------------	--------------

Image 1: CHASSIS-BACK

241	0121P00041DG	PARTITION PANEL
261	0131P00002S	FAN MOTOR 100 W, 2 SP, 6 PL (M5, M6, M7, M8, M9)
261	0131P00000S	FAN MOTOR 40 W, 2 SP, 8 PL (M1, M2, M3, M4)
281	20414601	CONDENSER FAN
311	11044101	BLOWER WHEEL
491	CAP050300370RSS	CAPACITOR 5/30/370V
501	C6300502	CAPACITOR STRAP
511	11046302	LEVER ARM (M1, M2, M4, M5, M8, M9)
521	11115401	CABLE (M1, M2, M4, M5, M8, M9)
531	20304003	PROTECTION SHIELD
541	11046105PDG	VENT DOOR
571	11191703	PARTITION PANEL BRACKET (QTY 2)
871	11149201	FAN MUFFIN (M6)
901	11166301	POWER VENT BRACKET (M3, M6, M7)
921	11166101	POWER VENT MOTOR BRACKET (M3, M6, M7)
931	11172801	POWER VENT MOTOR (M3, M6, M7)
941	11166201	POWER VENT COVER BRACKET (M3, M6, M7)
981	11166401	EXTENSION SPRING (M3, M6, M7)
1221	B1160701	TERMINAL BOARD (M3, M6, M7)

Expanded Model Nomenclature

M1 - PTC093D00ARDA
M2 - PTC093D00CRDA
M3 - PTC093D00GHDA
M4 - PTC093D00HHDA
M5 - PTC123D00ARDA
M6 - PTC123D00FHDA
M7 - PTC123D00GHDA
M8 - PTC123D00HHDA
M9 - PTC123D00HZDA

Replacement Parts List

Image 1

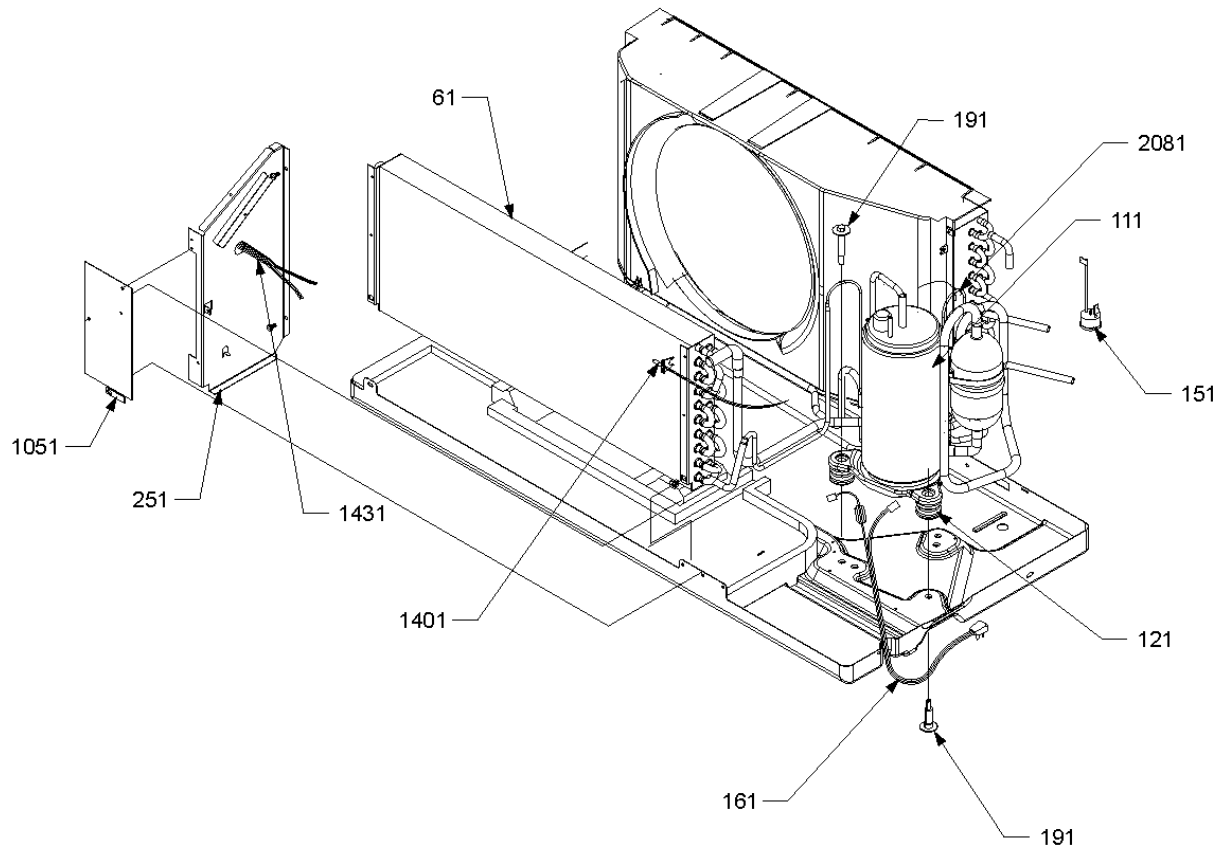
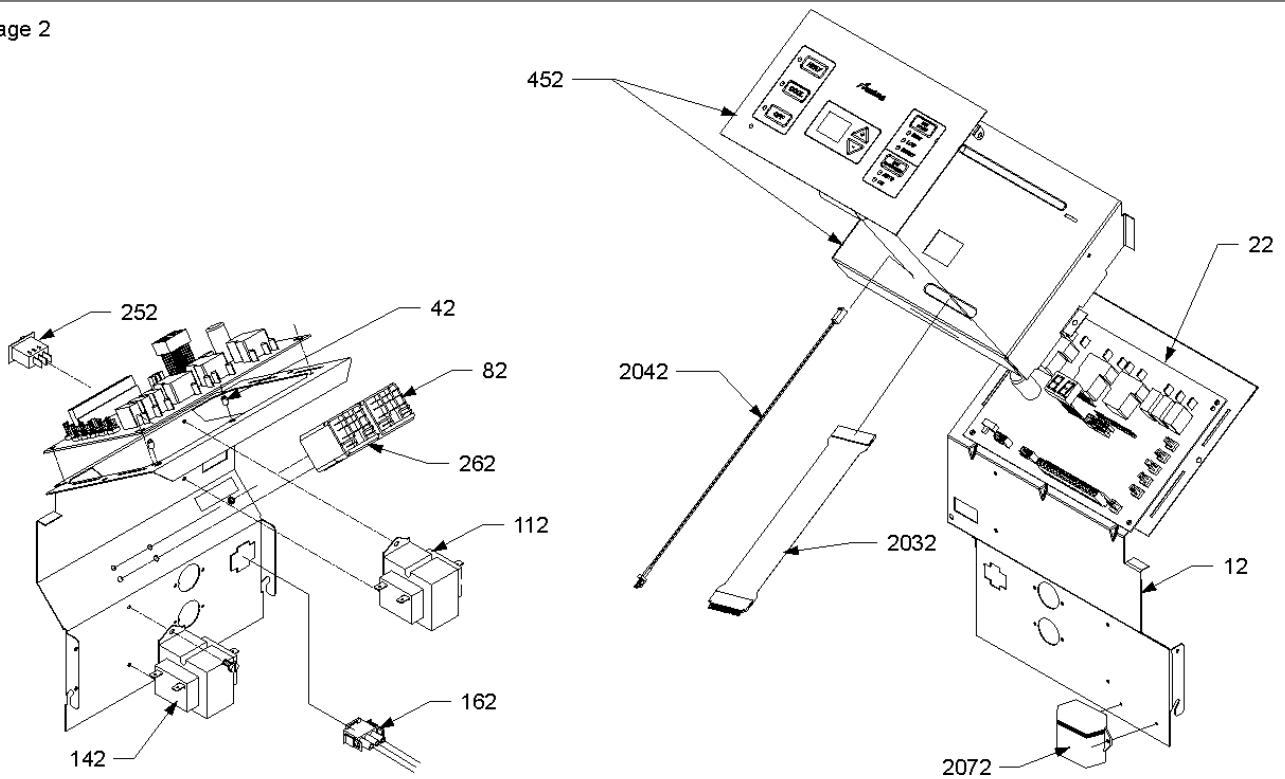


Image 2



Replacement Parts List

Ref. Part No: No:	Description:	Ref. Part No: No:	Description:
----------------------	--------------	----------------------	--------------

Image 1: CHASSIS-FRONT

61	0202P00046S	TUBING ASSY, EVAP COIL
111	44R282AG-5ESS	12K RECHI ROTARY COMPRESSOR (M5, M6, M7, M8, M9)
111	44R121AS	9K RECHI ROTARY COMPRESSOR (M1, M2, M3, M4)
121	60130203	GROMMET - RECHI COMPRESSOR (M1, M2, M3, M4)
121	60140209	GROMMET - RECHI COMPRESSOR (M5, M6, M7, M8, M9)
151	60343501	OVERLOAD PROTECTOR (M5, M6, M7, M8, M9)
151	60343507	OVERLOAD PROTECTOR (M1, M2, M3, M4)
161	0130P00006	CORD 250 VAC, 15A (LCDI)
191	M0253610	SHOULDER SCREW (M5, M6, M7, M8, M9)
191	M0253661	SHOULDER SCREW (M1, M2, M3, M4)
251	20403301	MID PARTITION PANEL
1051	20410801	ACCESS COVER
1401	0130P00046	THERMISTOR-INDOOR AMBIENT
1431	20295707	THERMISTOR-INDOOR COIL
2081	0130P00039	THERMISTOR-OUTDOOR AMBIENT (M9)

Image 2: CONTROL PANEL

12	11044505	CONTROL PANEL
22	PCBCP127S	CONTROL BOARD, M61 HYDRONIC (M3, M4, M6, M7, M8)
22	PCBCP126S	CONTROL BOARD, M61 WIRELESS (M1, M2, M5, M9)
42	M0590702	SUPPORT (QTY 2)
82	C8873917	RELAY (HYDRONIC) (M3, M4, M6, M7, M8, M9)
112	20512501	TRANSFORMER (M1, M2, M4, M5, M8, M9)
142	20512501	TRANSFORMER (QTY 2) (M3, M6, M7)
162	20008301	HYDRONIC HEAT HARNESS (M3, M4, M6, M7, M8, M9)
252	B1337701	PADDLE SWITCH (M3, M6, M7)
262	C8873932	RELAY (POWER VENT) (M3, M6, M7)
452	RSKP0005	CONTROL PANEL COVER AND MEMBRANE
2032	0130P00015	EXTENSION RIBBON (M3, M4, M6, M7, M8, M9)
2042	0130P00016	WIRE EXTENSION SL-156 (M3, M4, M6, M7, M8, M9)
2072	1261401	DIGITENNA (M9)

Expanded Model Nomenclature

M1 - PTC093D00ARDA
M2 - PTC093D00CRDA
M3 - PTC093D00GHDA
M4 - PTC093D00HHDA
M5 - PTC123D00ARDA
M6 - PTC123D00FHDA
M7 - PTC123D00GHDA
M8 - PTC123D00HHDA
M9 - PTC123D00HZDA

